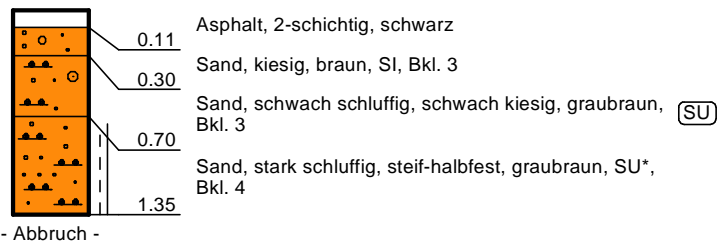




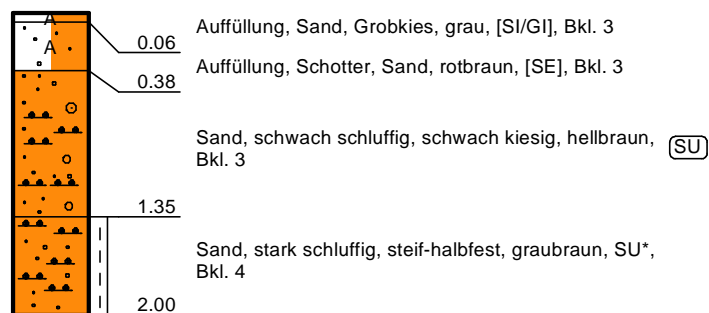
### KB + BS 8

107,58 mNN



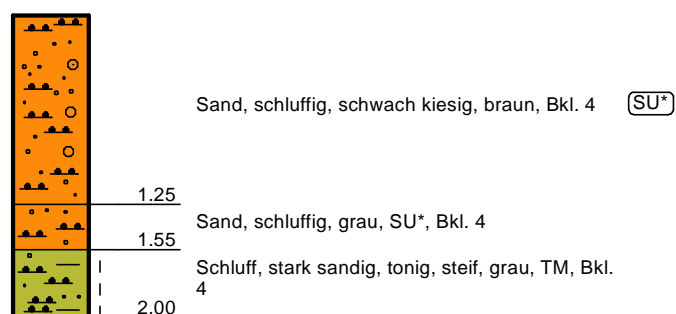
### BS 9

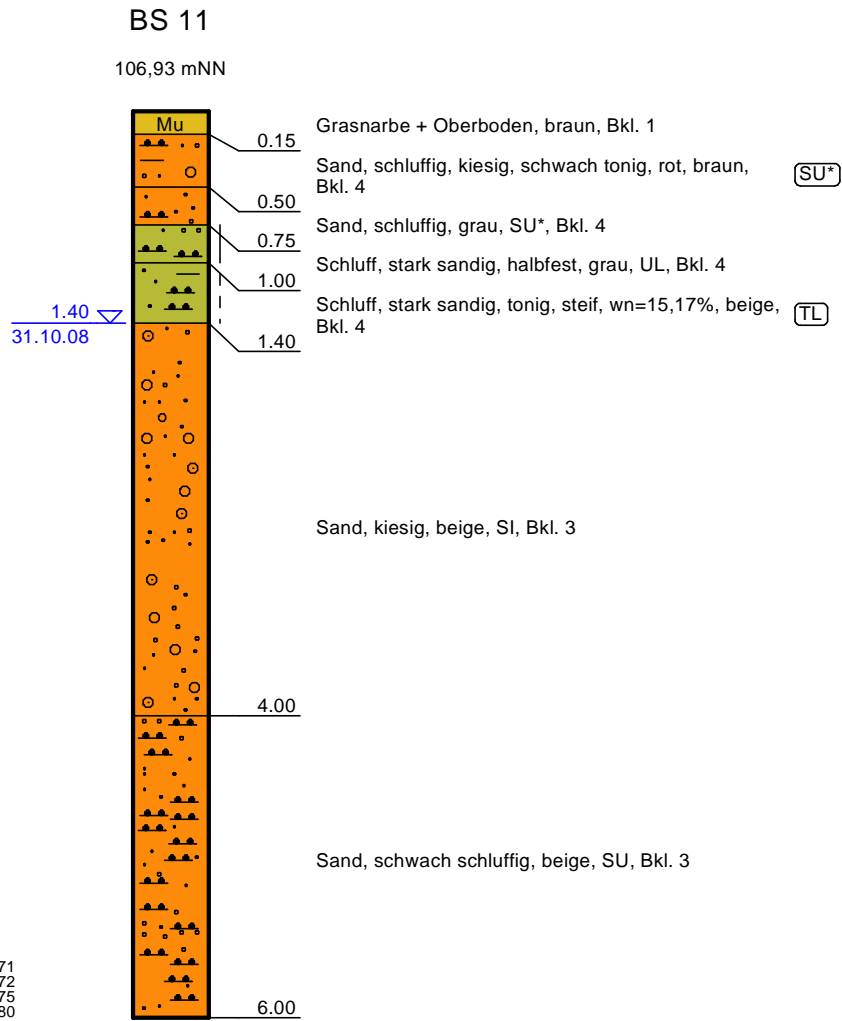
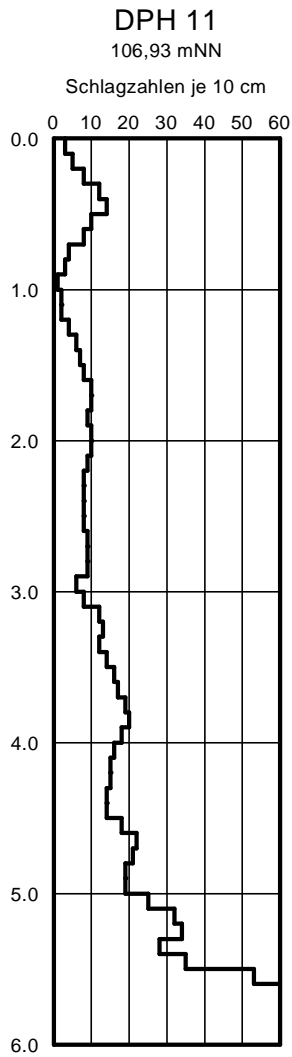
108,28 mNN

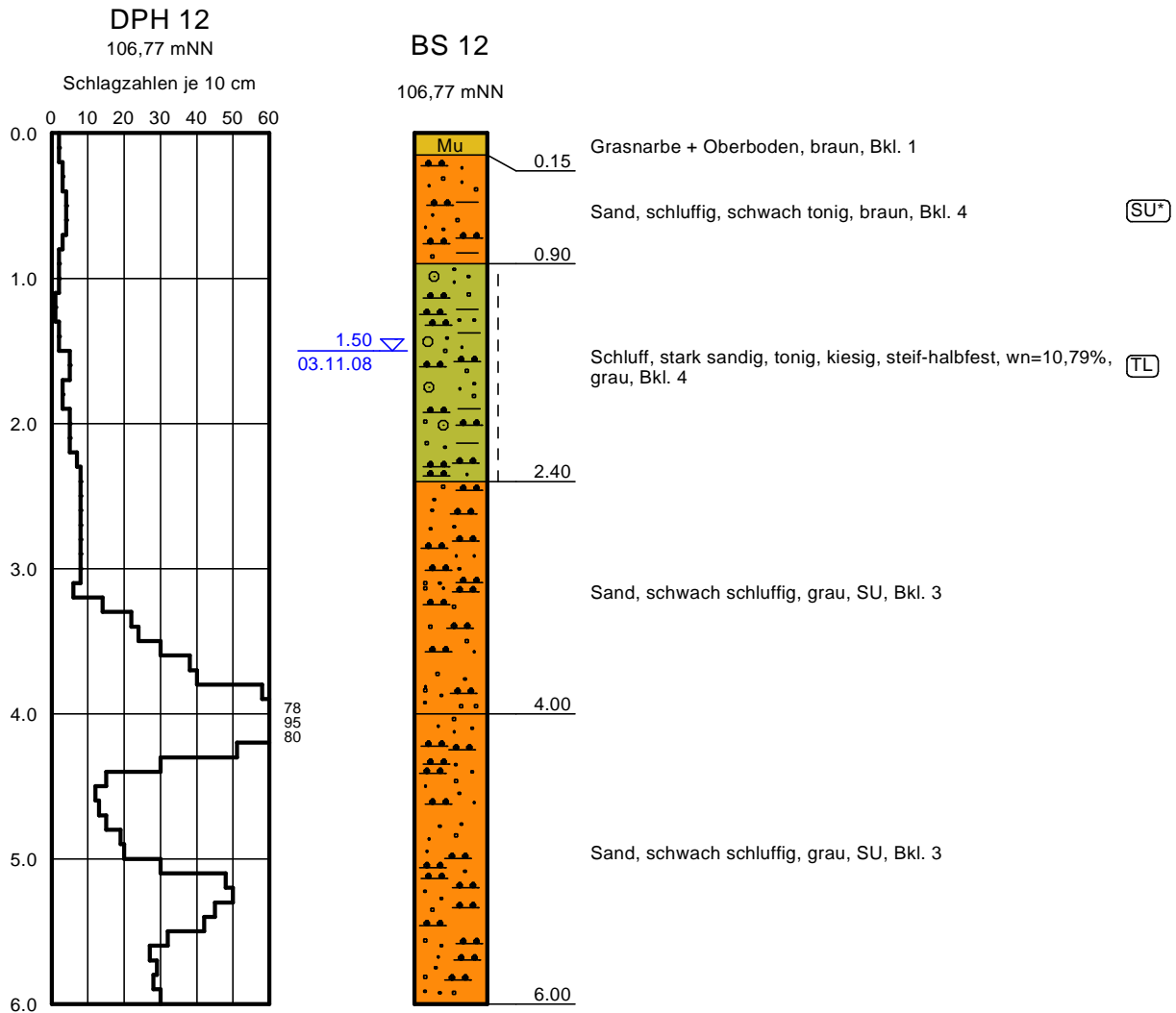


### BS 10

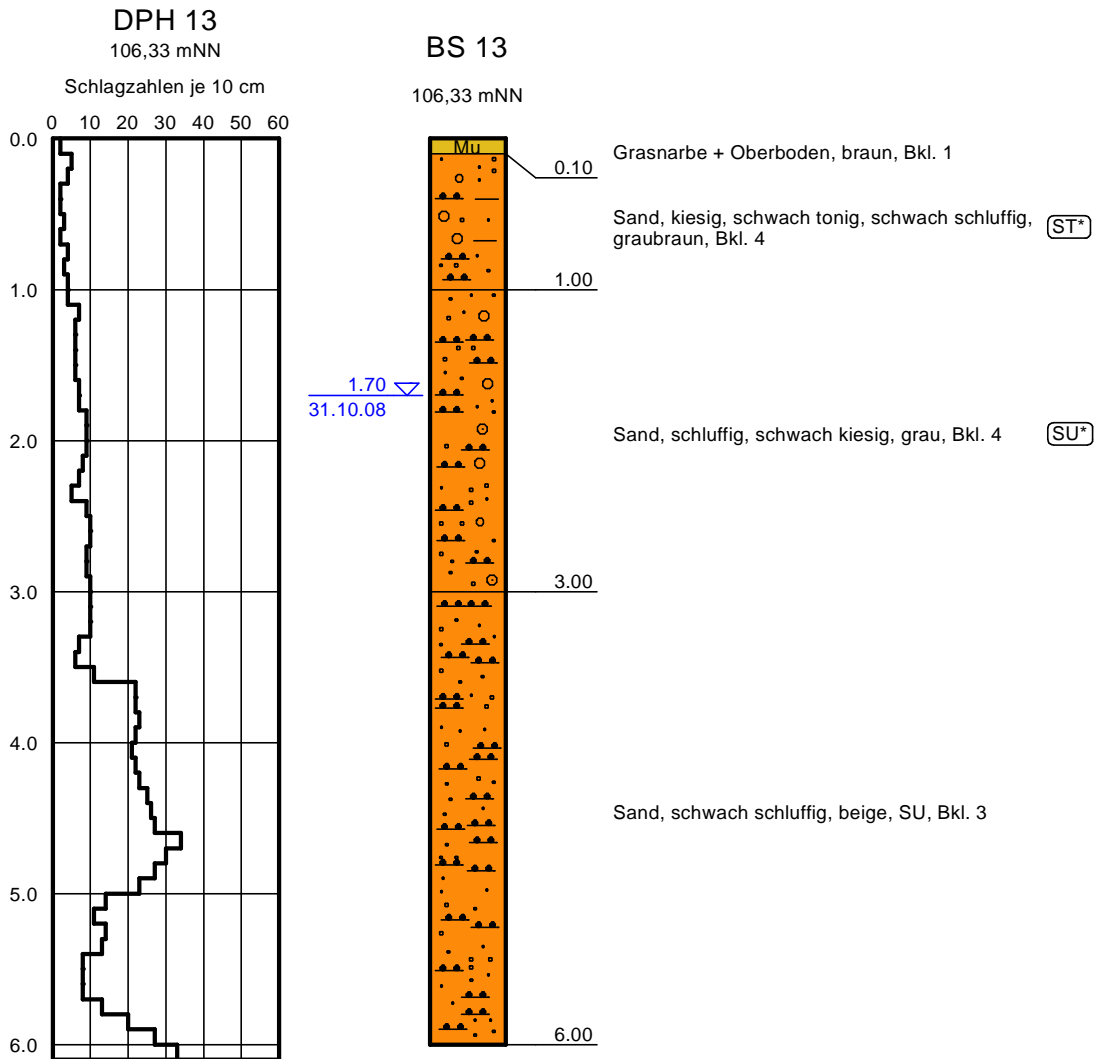
107,64 mNN







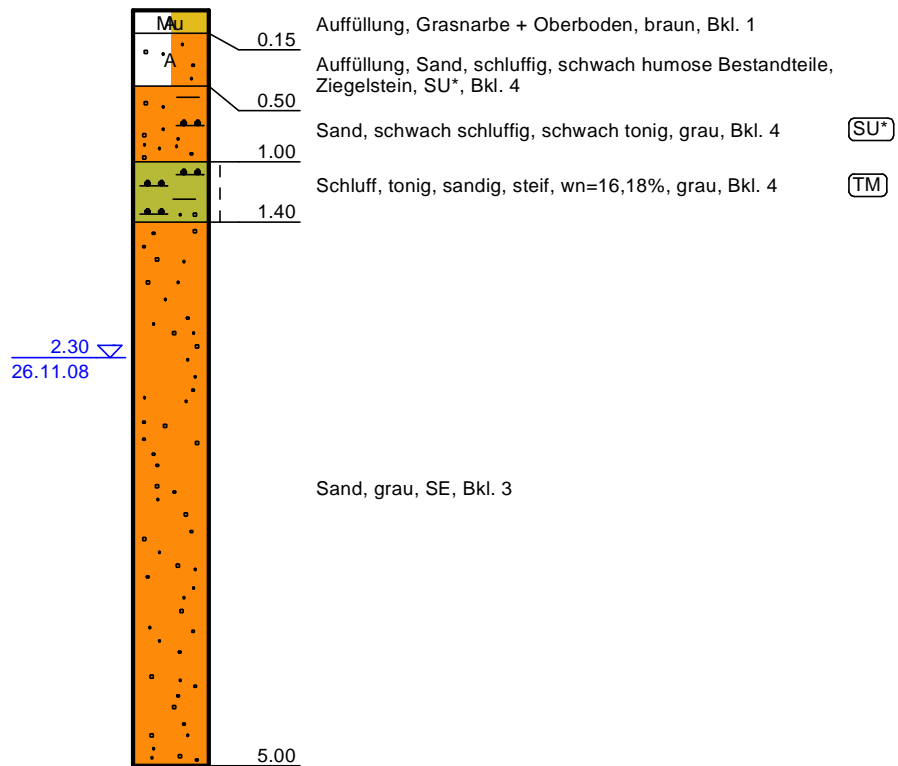


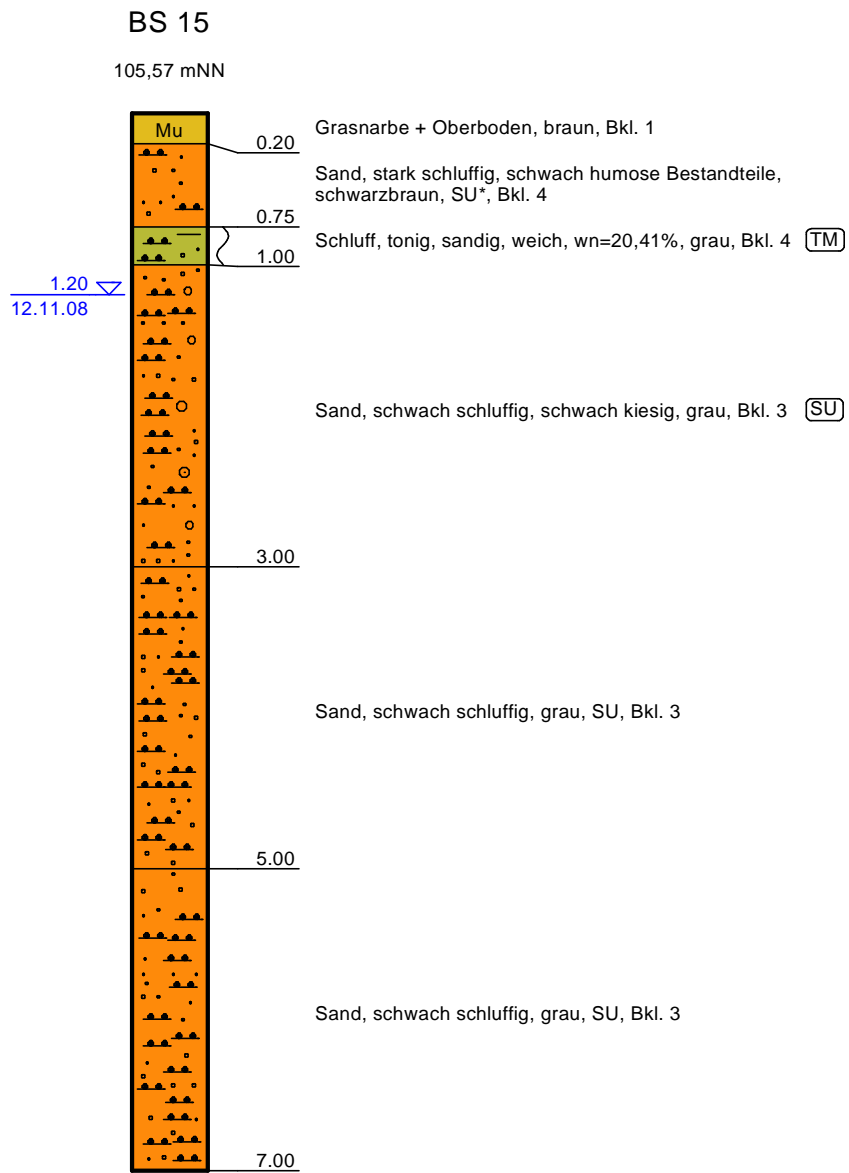
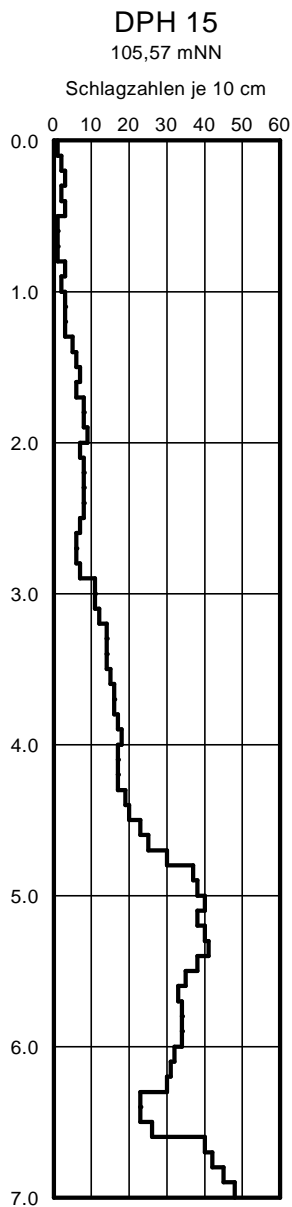


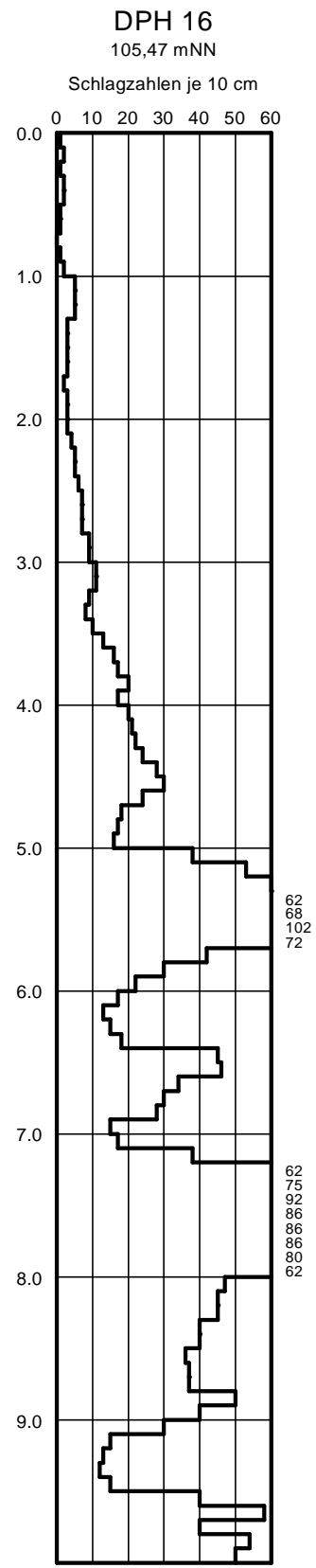


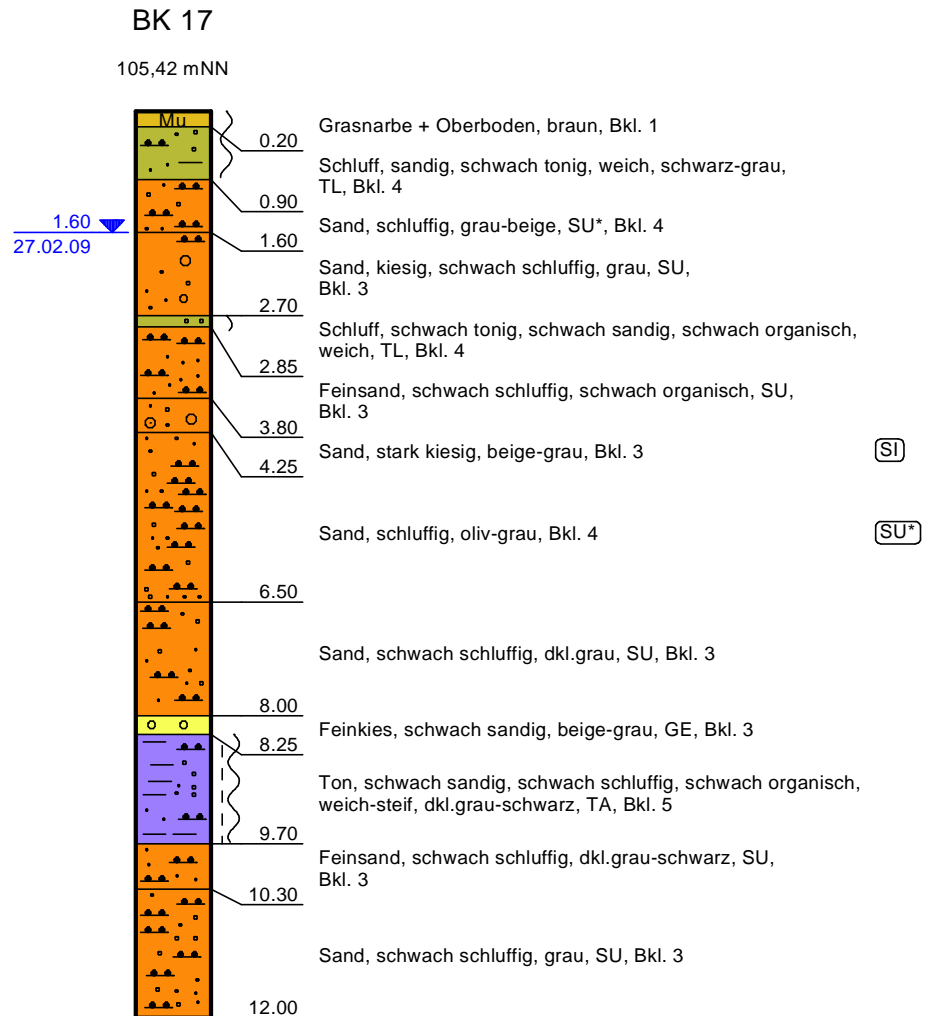
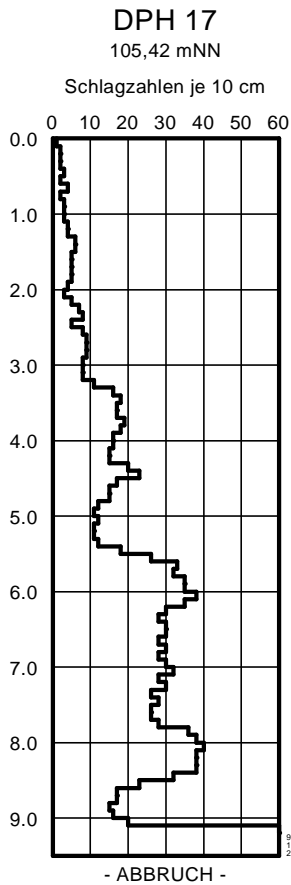
### BS 14

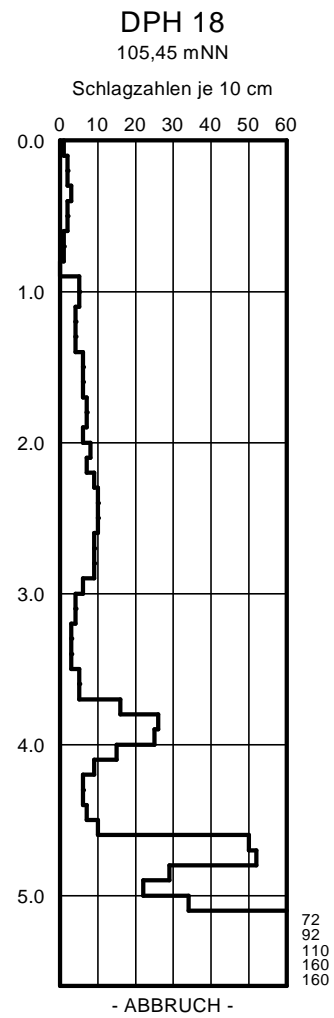
106,39 mNN

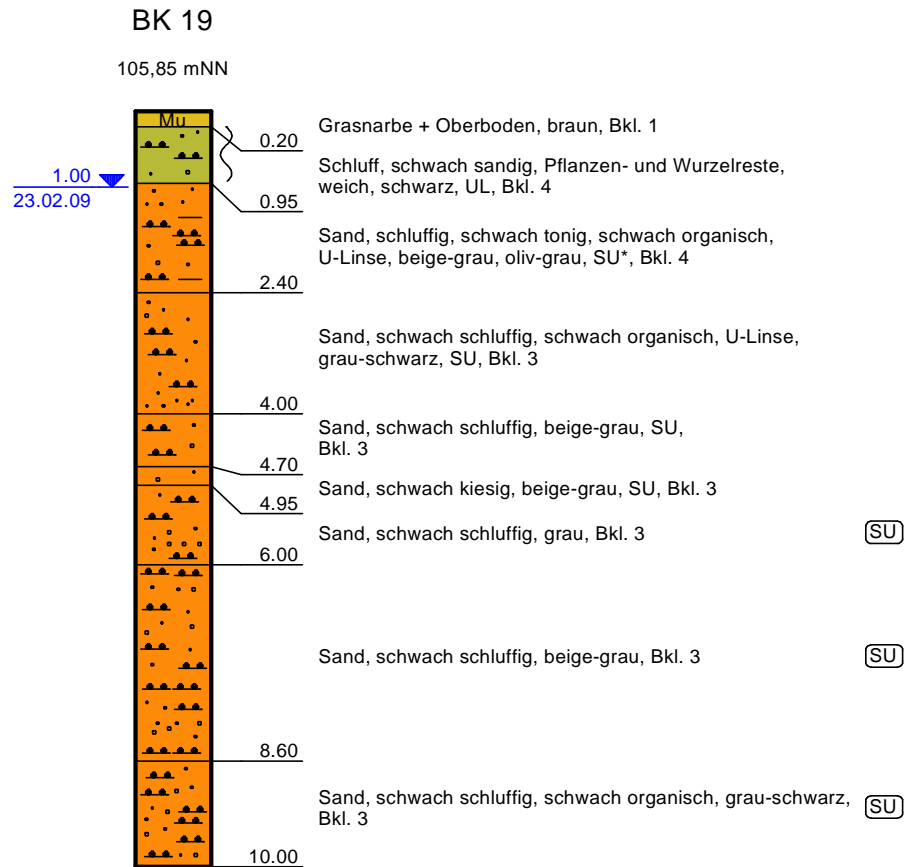
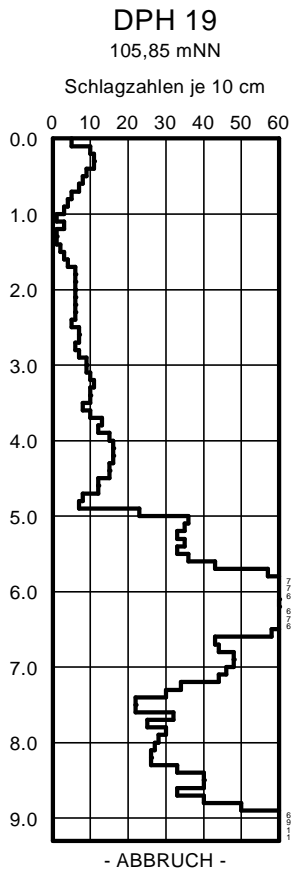


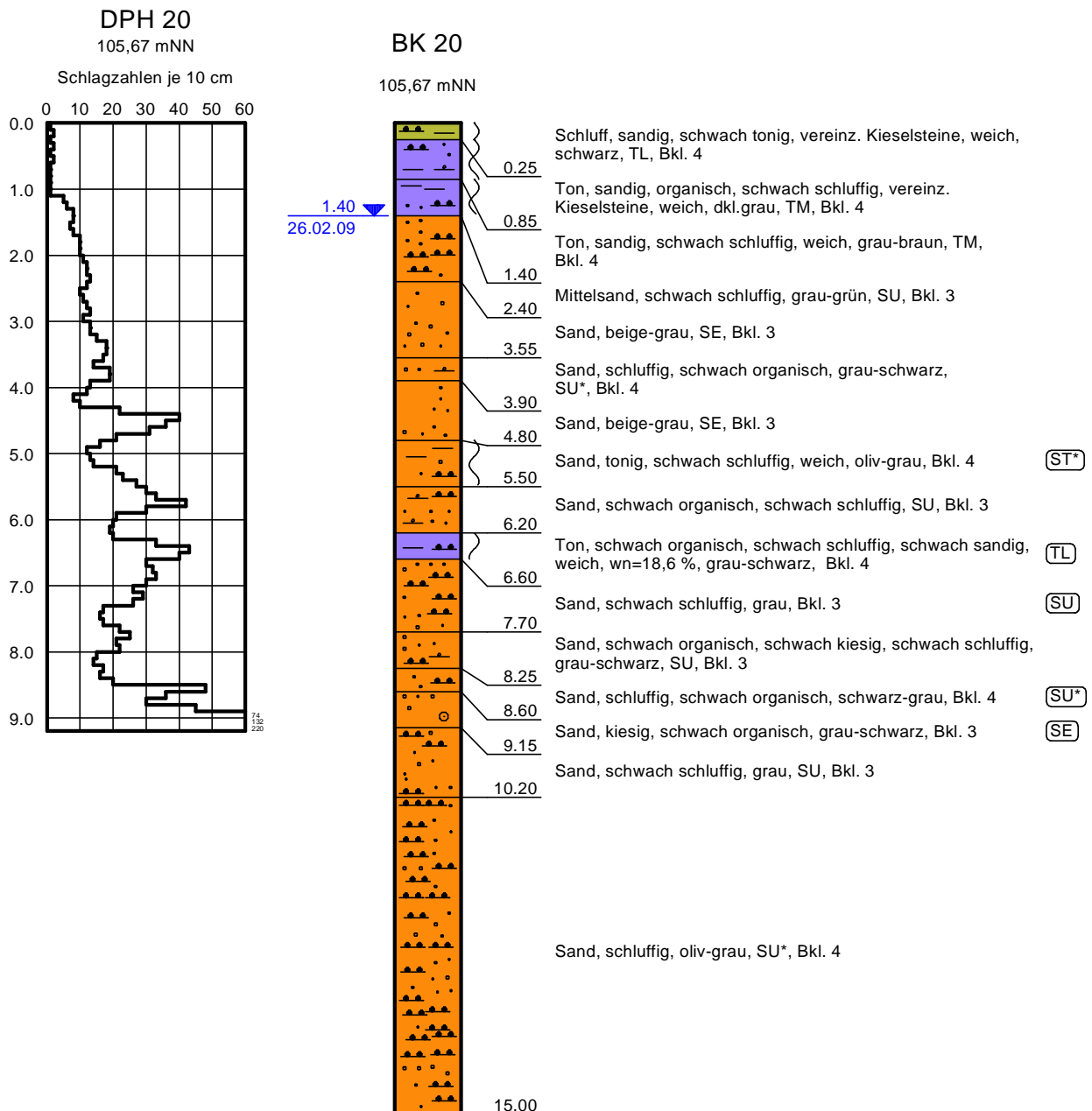




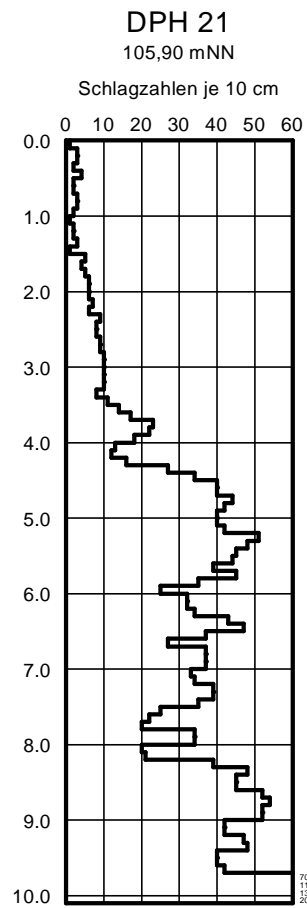










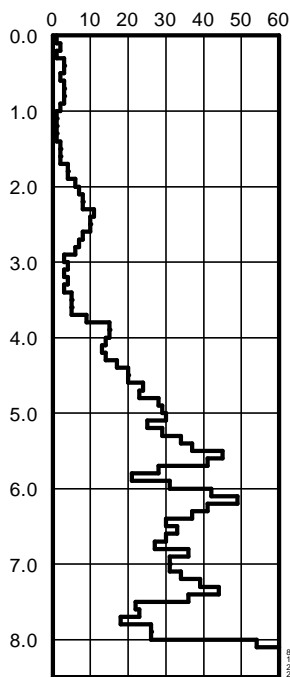




**DPH 22**

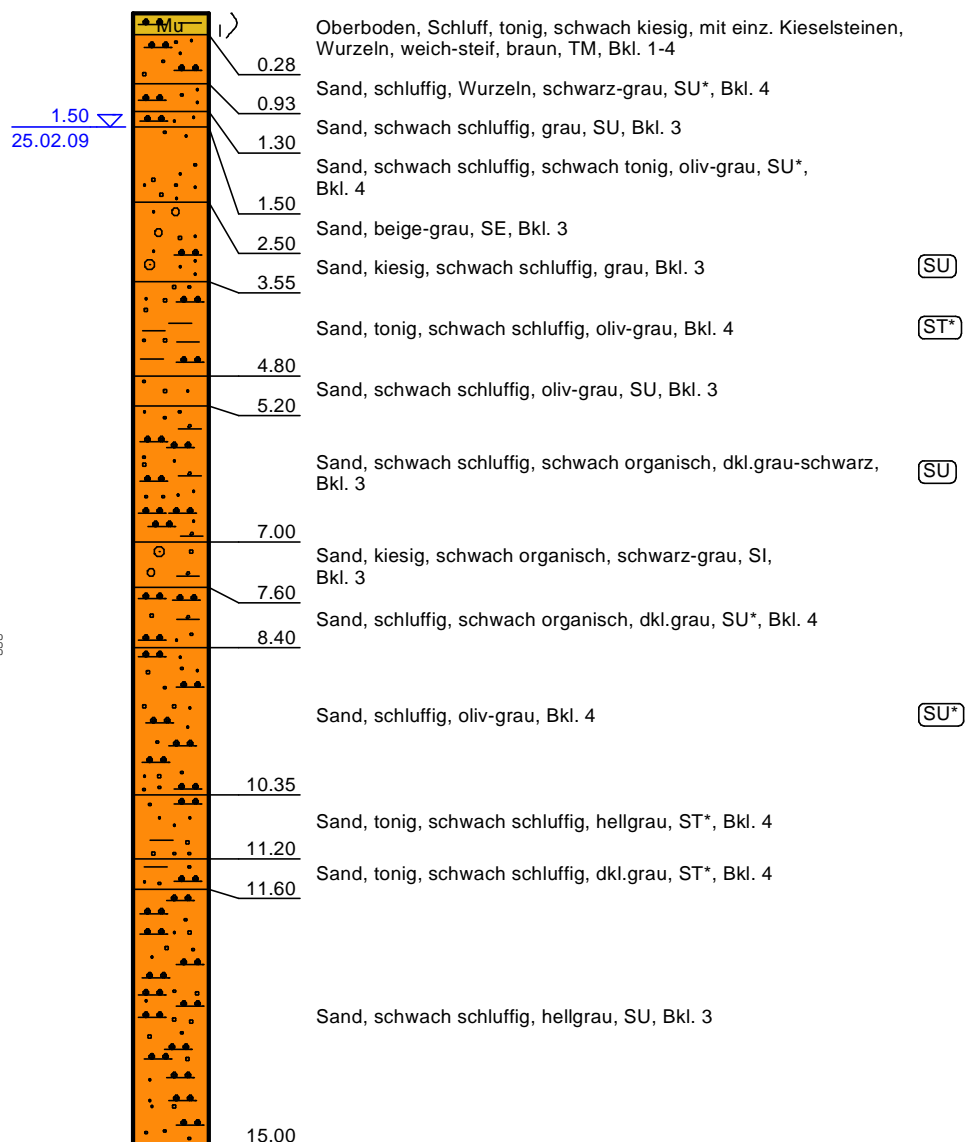
105,95 mNN

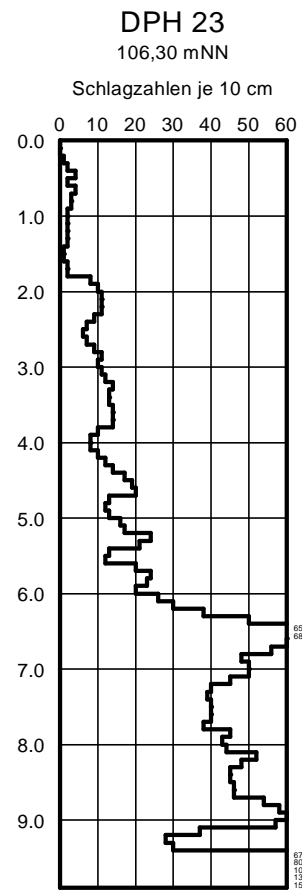
Schlagzahlen je 10 cm

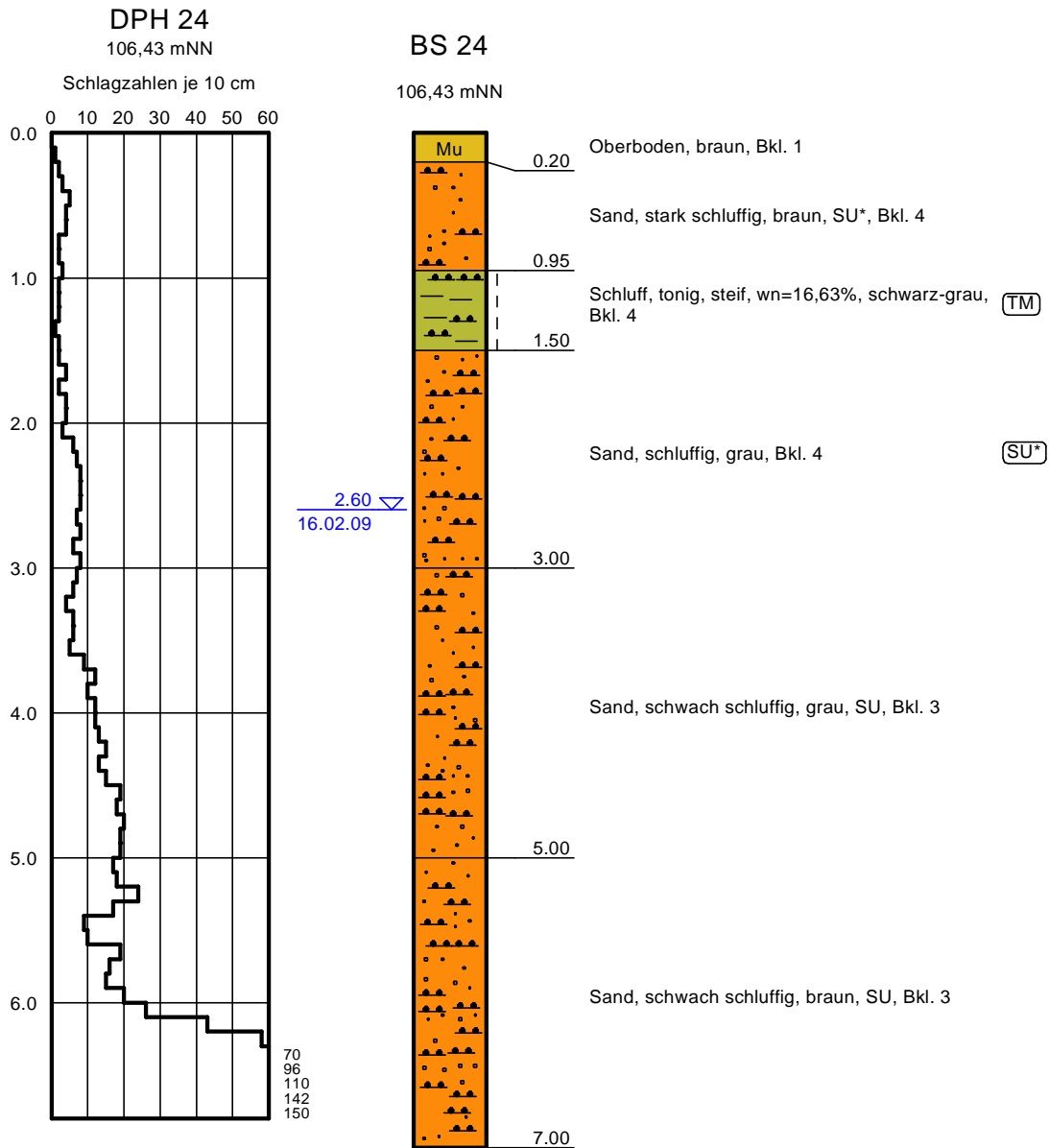


**BK 22**

105,95 mNN



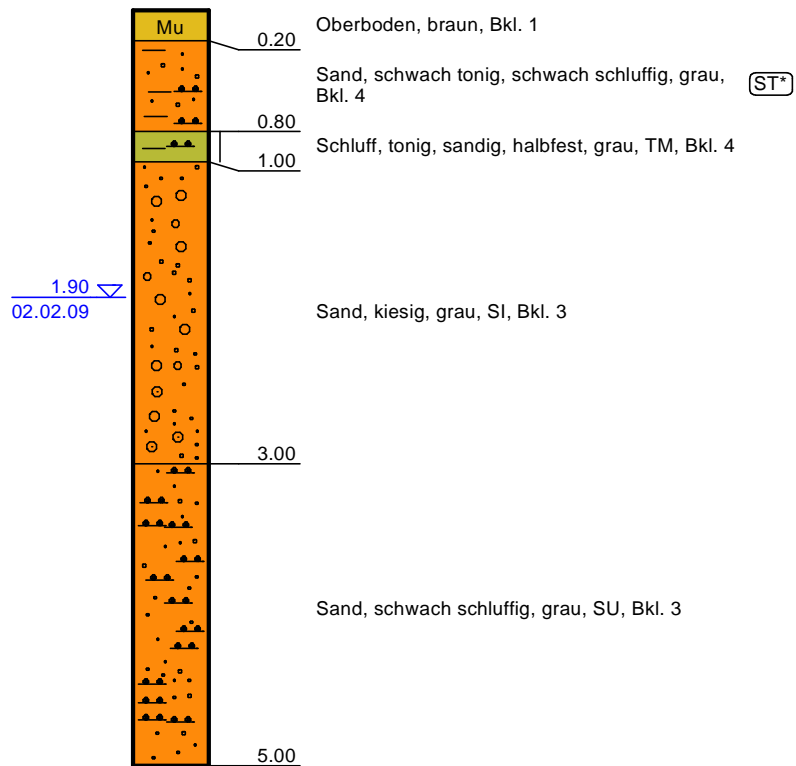






### BS 25

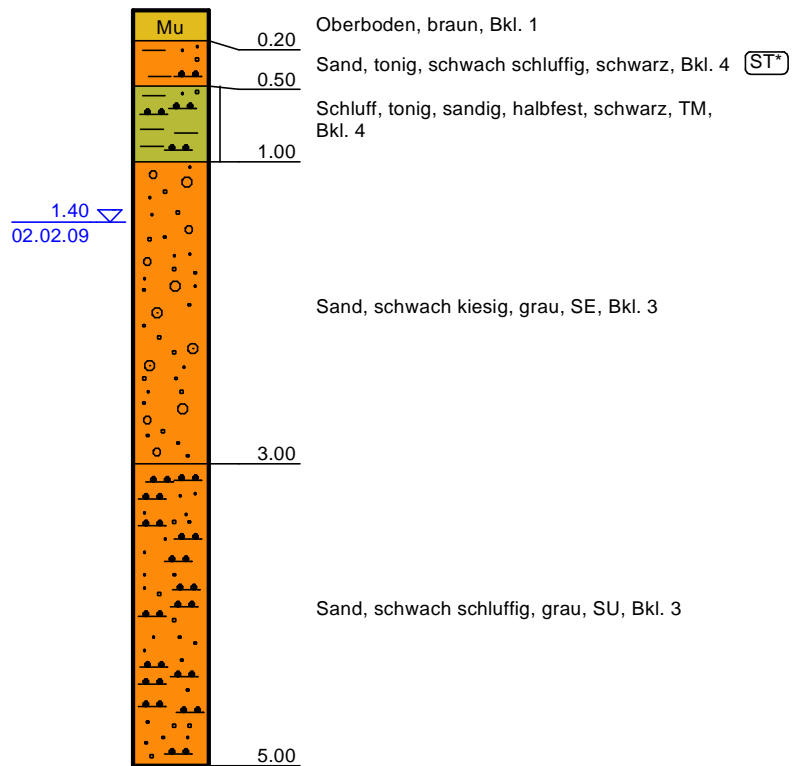
106,44 mNN





### BS 26

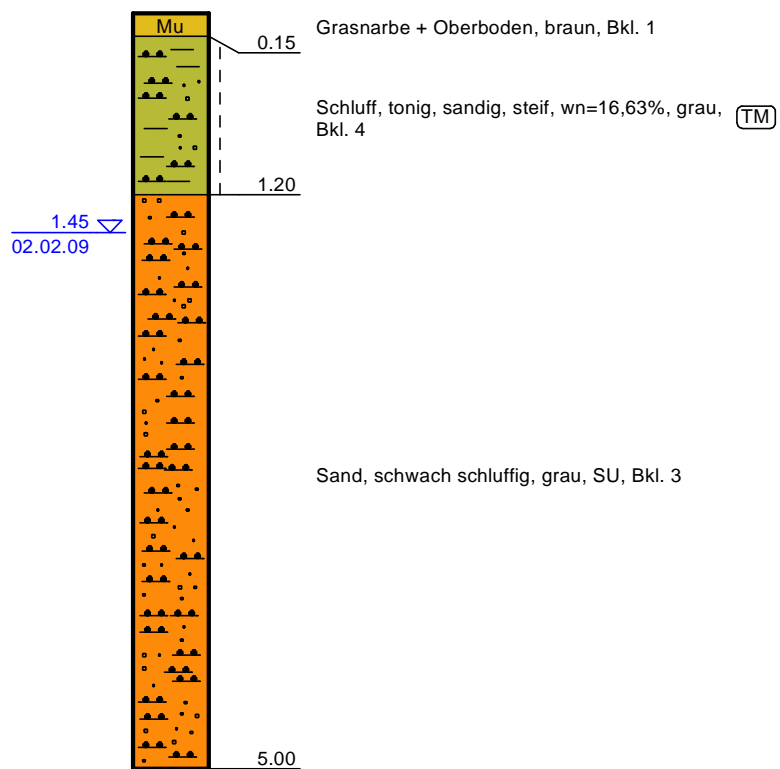
106,61 mNN

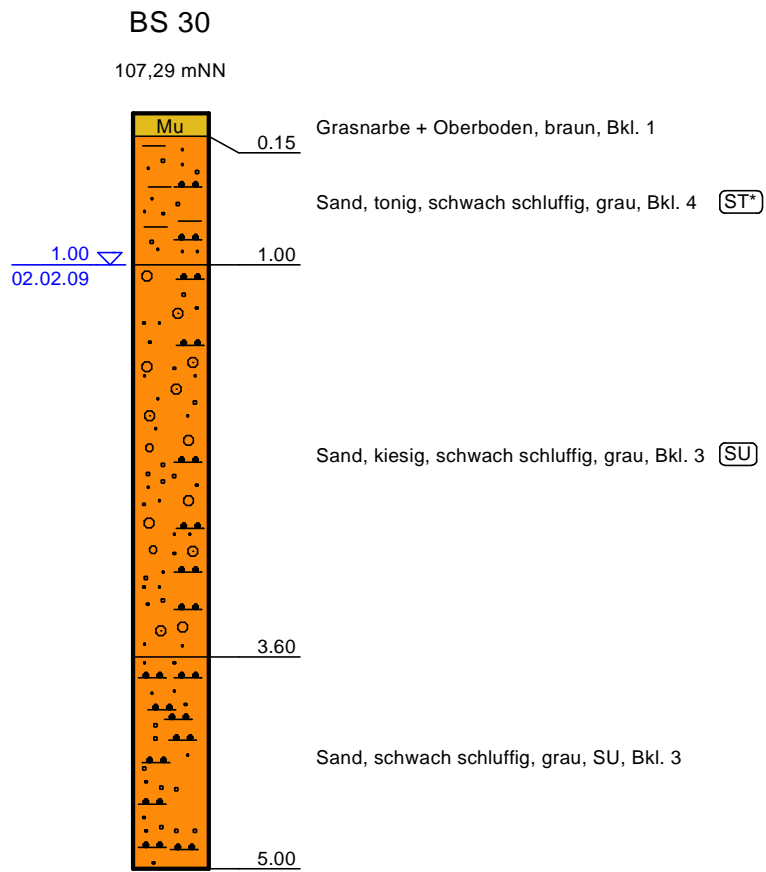




### BS 28

106,79 mNN



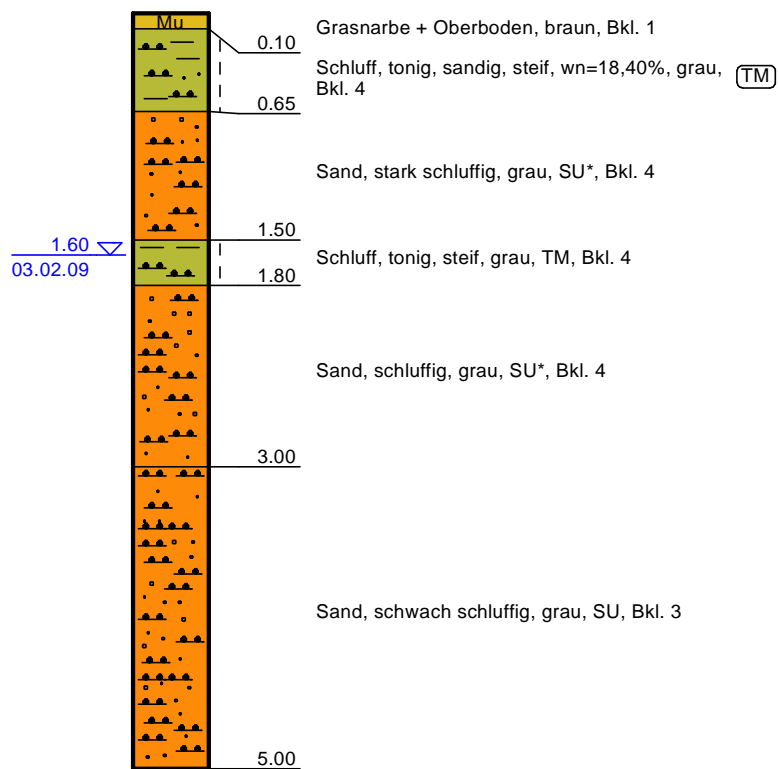






### BS 31

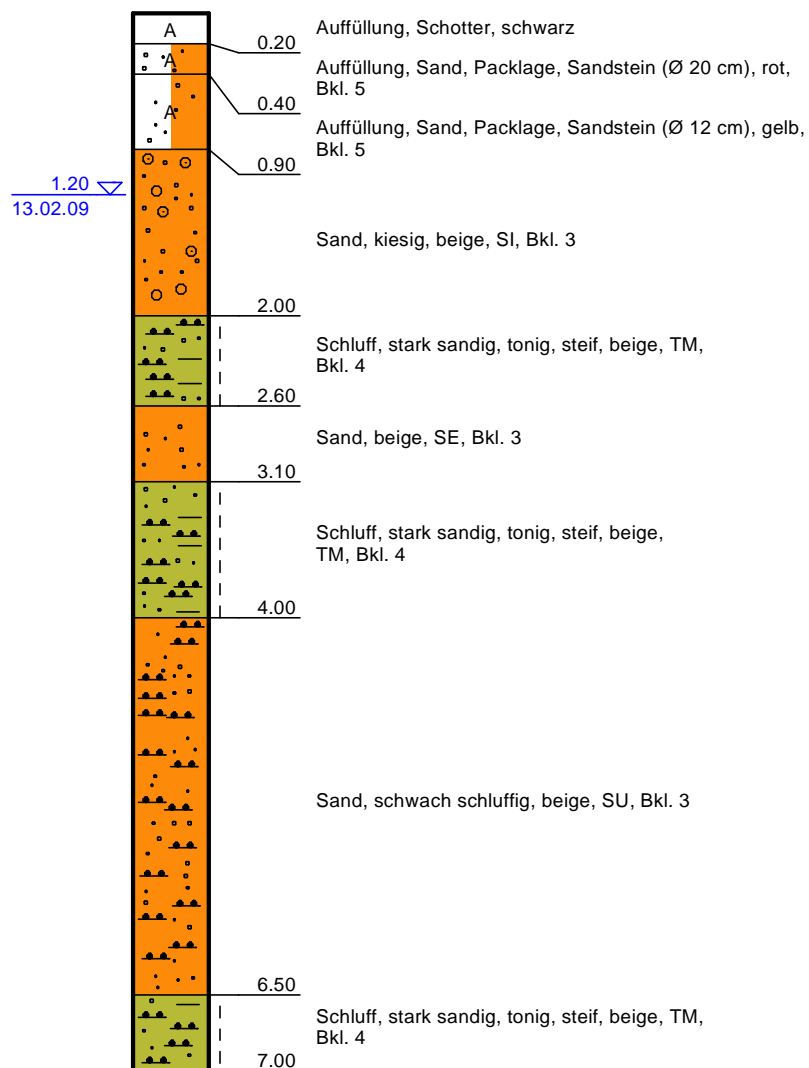
107,80 mNN

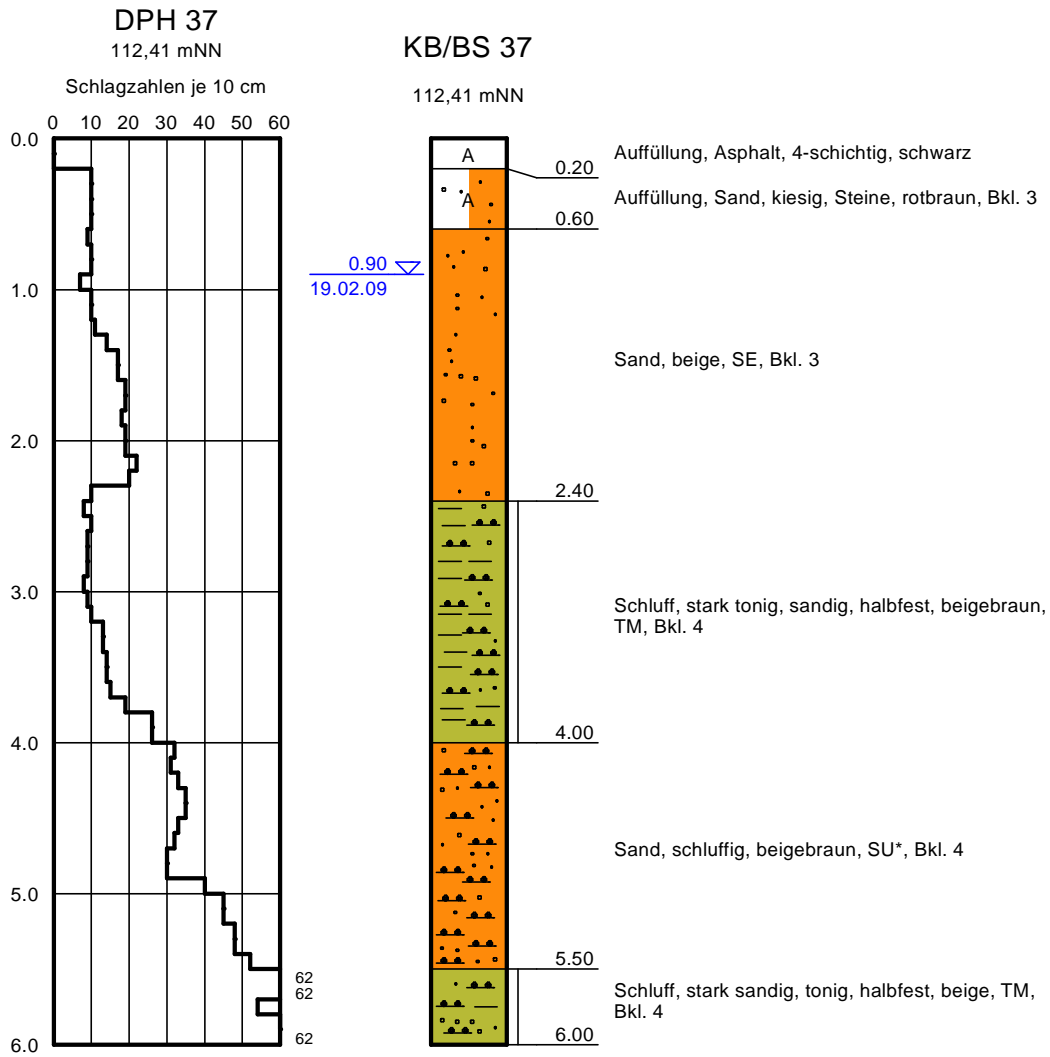




### BS 36

112,66 mNN

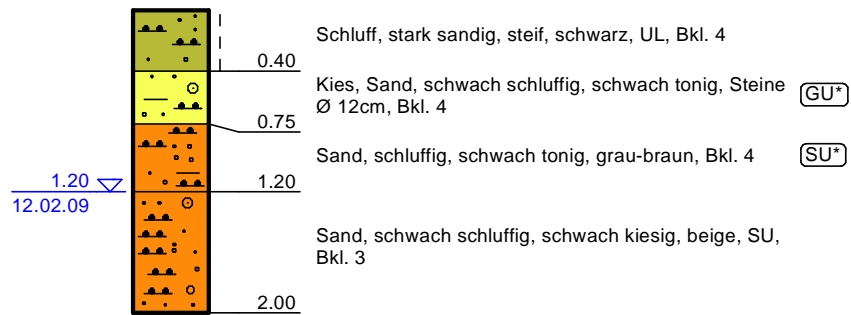






### BS 38

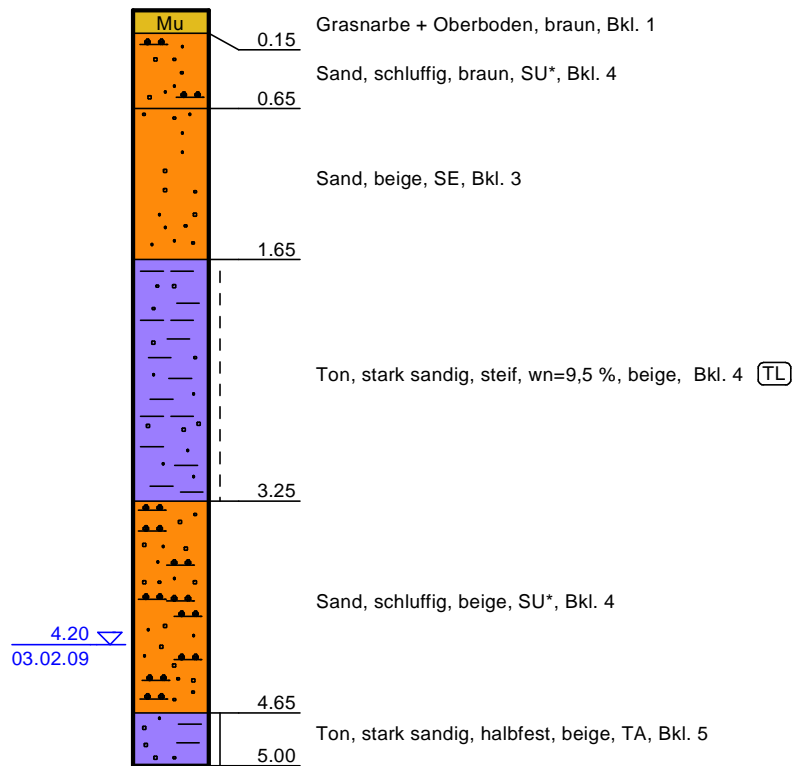
111,18 mNN





### BS 39

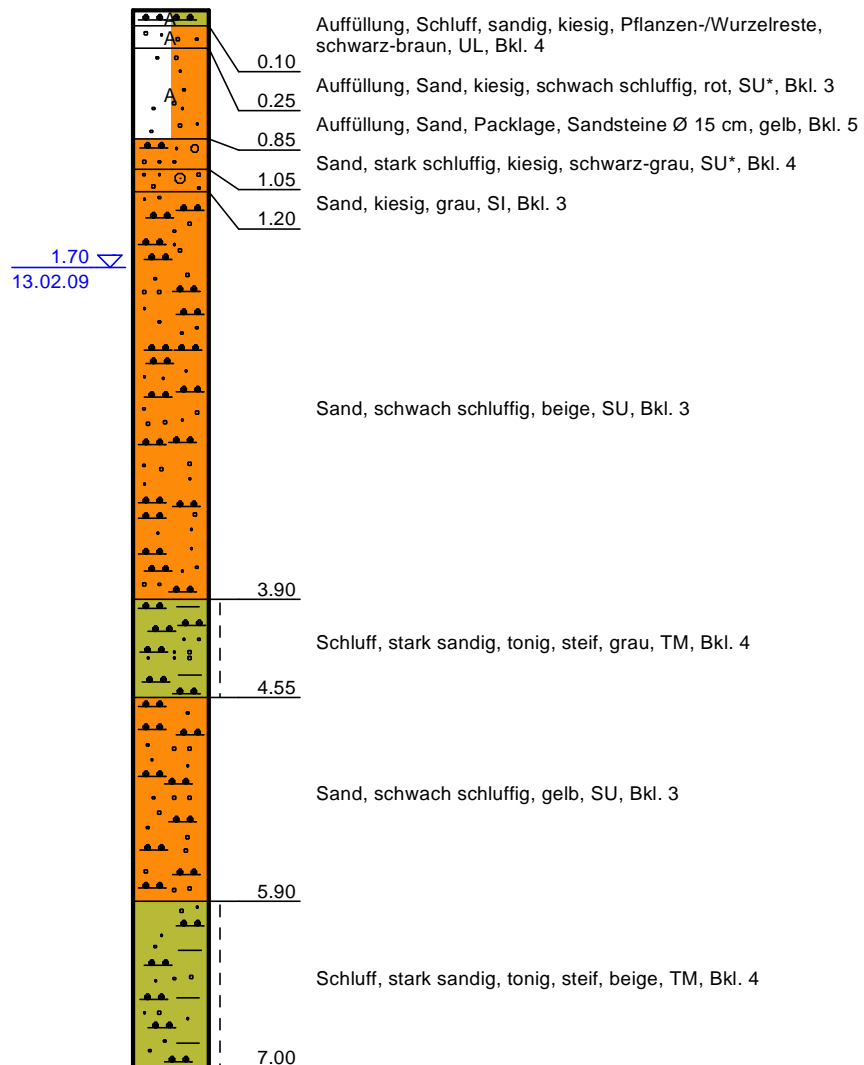
114,86 mNN

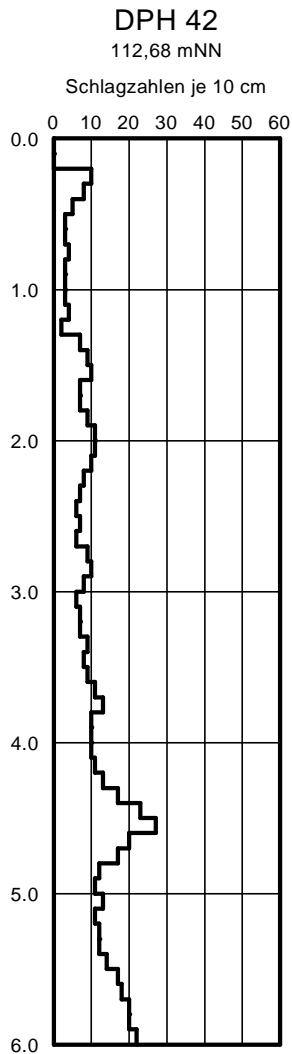




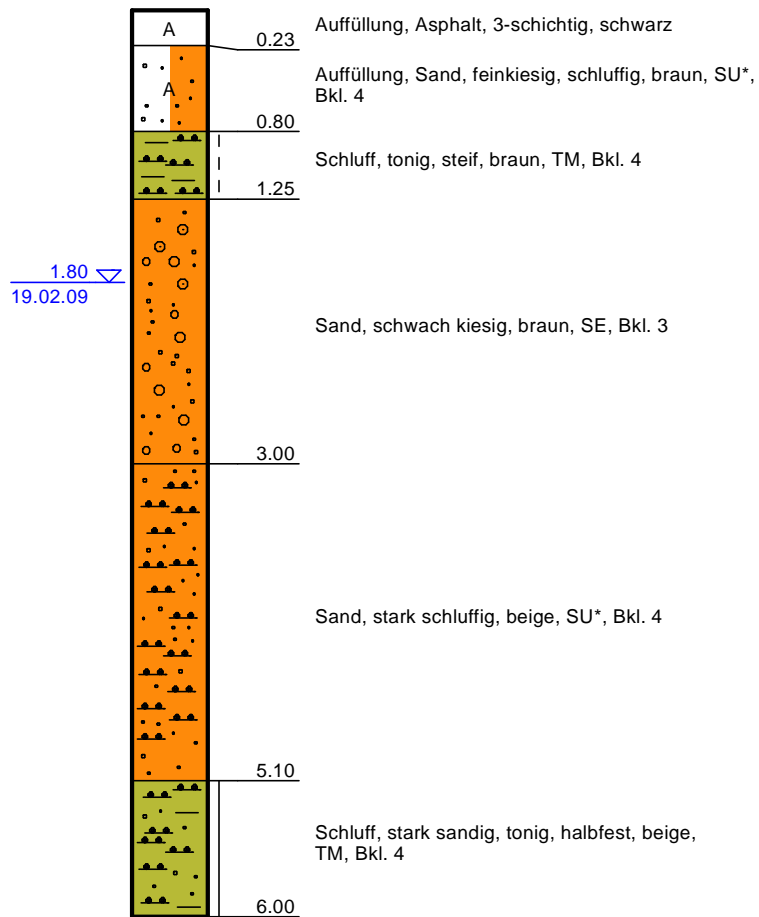
### BS 41

112,61 mNN





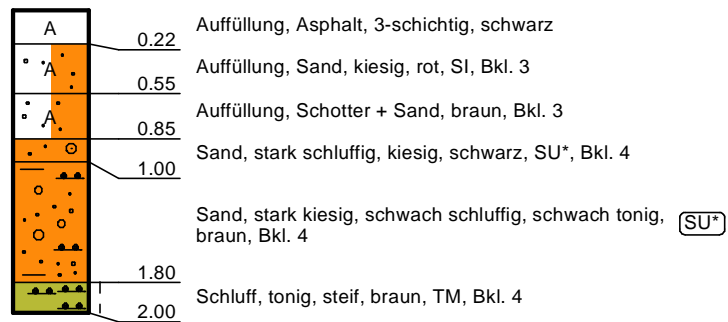
**KB/BS 42**  
112,68 mNN





### KB/BS 43

112,50 mNN

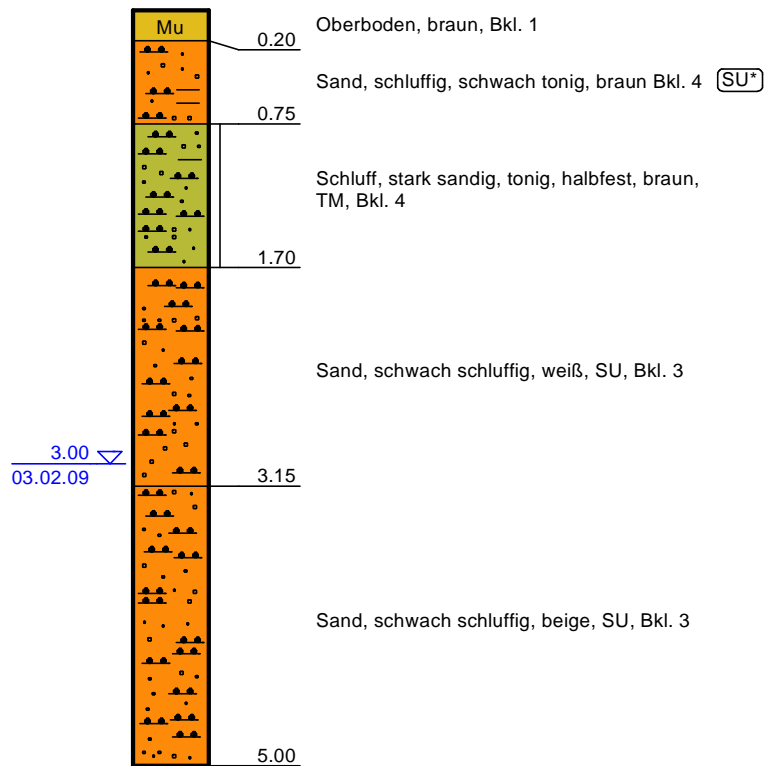






### BS 44

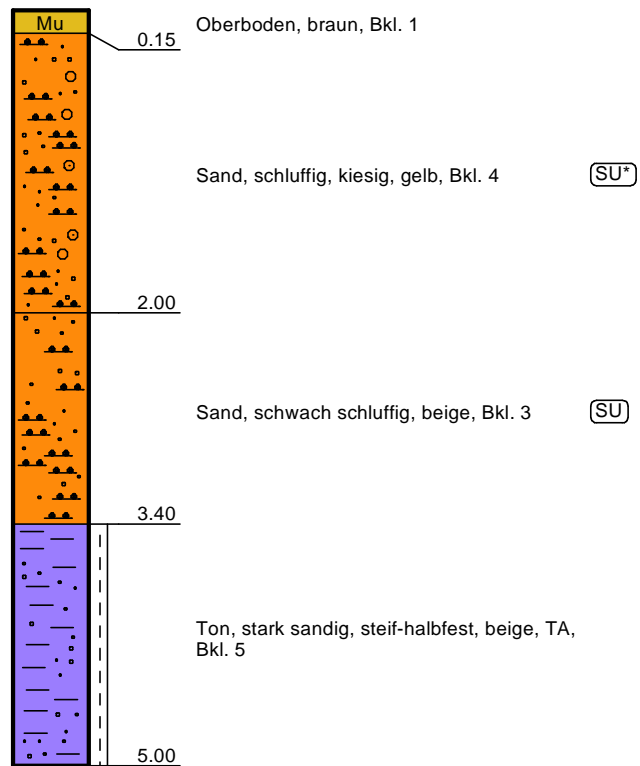
114,46 mNN





### BS 45a

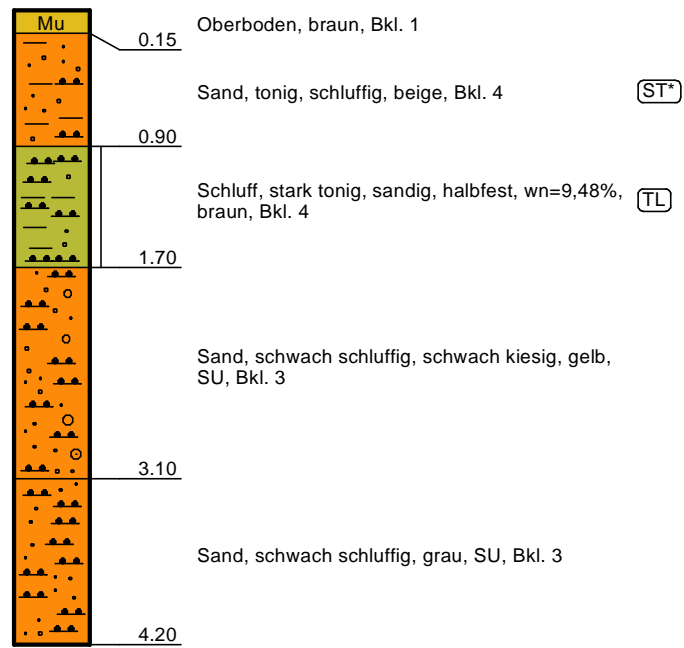
115,10 mNN





### BS 45b

119,95 mNN

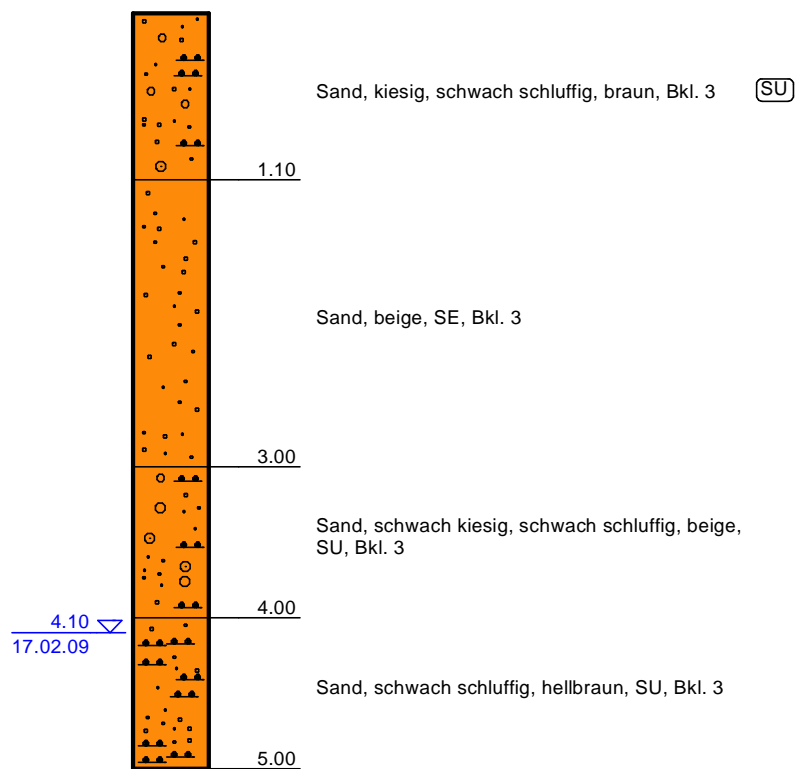


-Abbruch-



### BS 46

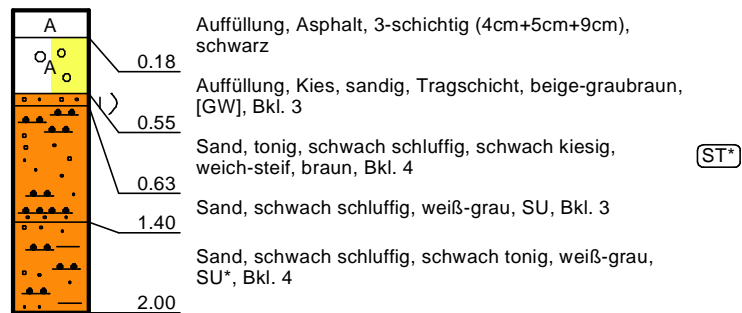
125,05 mNN





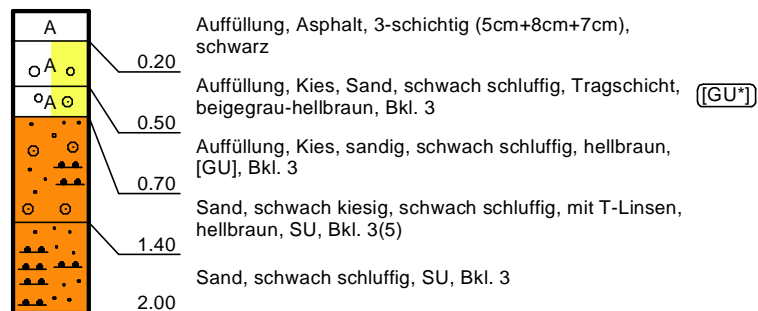
### KB/BS 47

131,31 mNN



### KB/BS 48

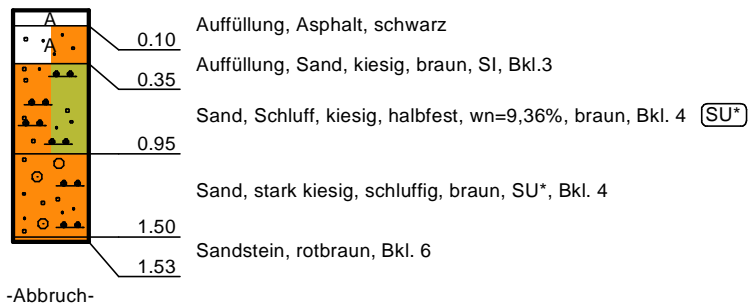
133,88 m NN





### KB/BS 49

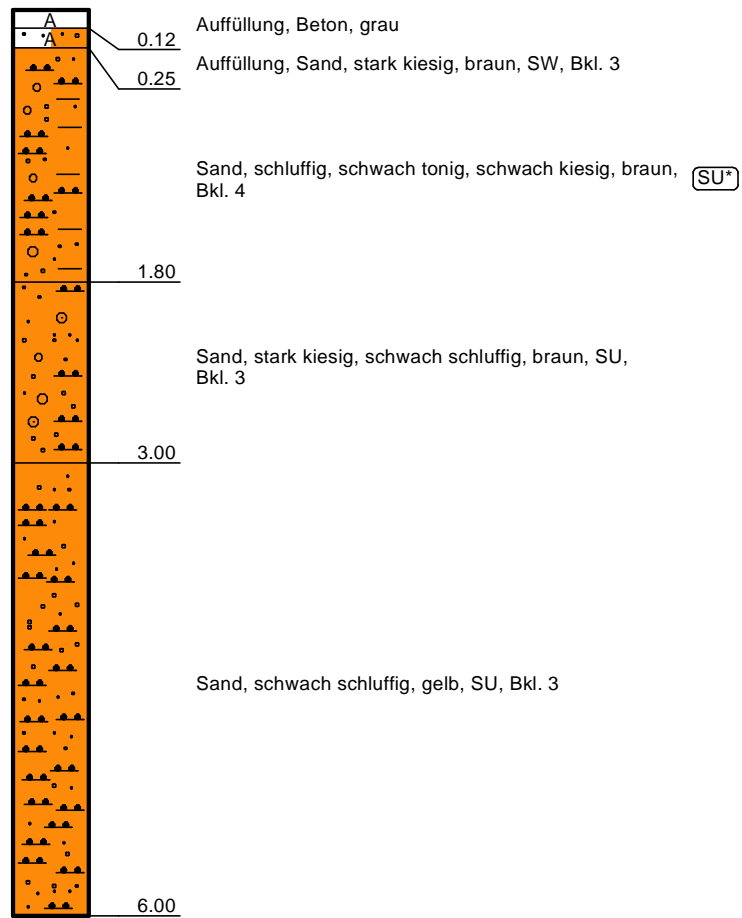
136,42 mNN





### KB/BS 52

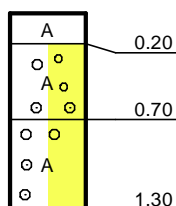
134,45 mNN





### KB/BS 53

133,03 mNN



Auffüllung, Asphalt, 3-schichtig (5cm+8cm+7cm), schwarz

Auffüllung, Kies, sandig, schwach schluffig, Tragschicht, hellbraun, [GU], Bkl. 3

Auffüllung, Kies, Sand, schwach schluffig, zehrborter Sandstein, hellbraun-rot, Bkl. 3

[GU]

- ABBRUCH -

### KB/BS 54

132,05 mNN



Auffüllung, Asphalt, 2-schichtig (8cm+8cm), schwarz

Auffüllung, Sand, stark kiesig, schwach schluffig, Tragschicht, beige-grau, Bkl. 3

[SU]

Kalkstein, zehrbort, weiß, Bkl. 6

Kies, sandig, schwach schluffig, hellbraun, [GU], Bkl. 3

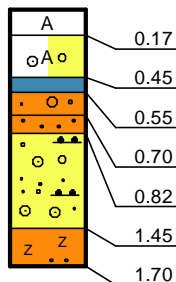
Sand, schluffig, schwach kiesig, hellbraun, SU\*, Bkl. 4

Sand, schwach kiesig, hellbraun, SE, Bkl. 3

Ton, schwach schluffig, schwach sandig, weich, braun, TA, Bkl. 5

### KB/BS 55

131,09 mNN



Auffüllung, Asphalt, 2-schichtig (5cm+12cm), schwarz

Auffüllung, Kies, sandig, Tragschicht, beige-grau, GI, Bkl. 3

Kalkstein, zerbohrt, weiß, Bkl. 6

Sand, stark kiesig, schluffig, hellbraun, Bkl. 4

[SU\*]

Sandstein, zerbohrt, rot, Bkl. 6

Kies, sandig, schwach schluffig, hellbraun, SU, Bkl. 3

Sandstein, zerbohrt, weiß-grau, Bkl. 6

- ABBRUCH -





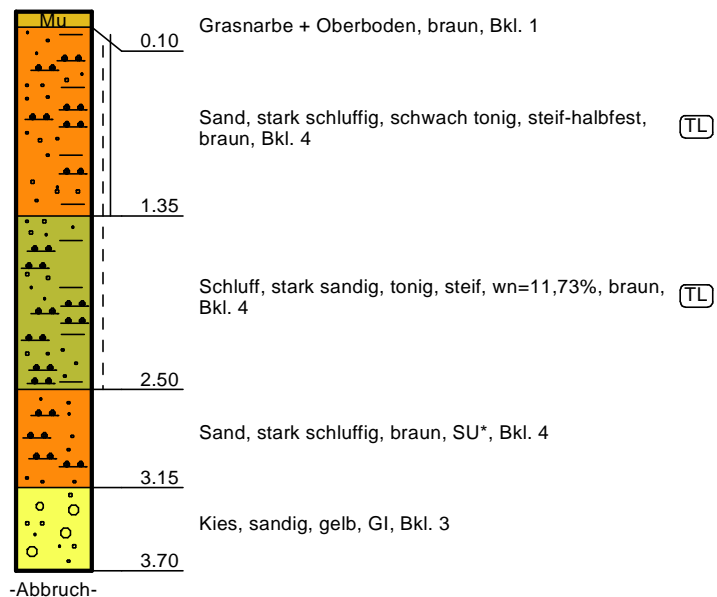
### BS 56

130,05 mNN



### BS 56a

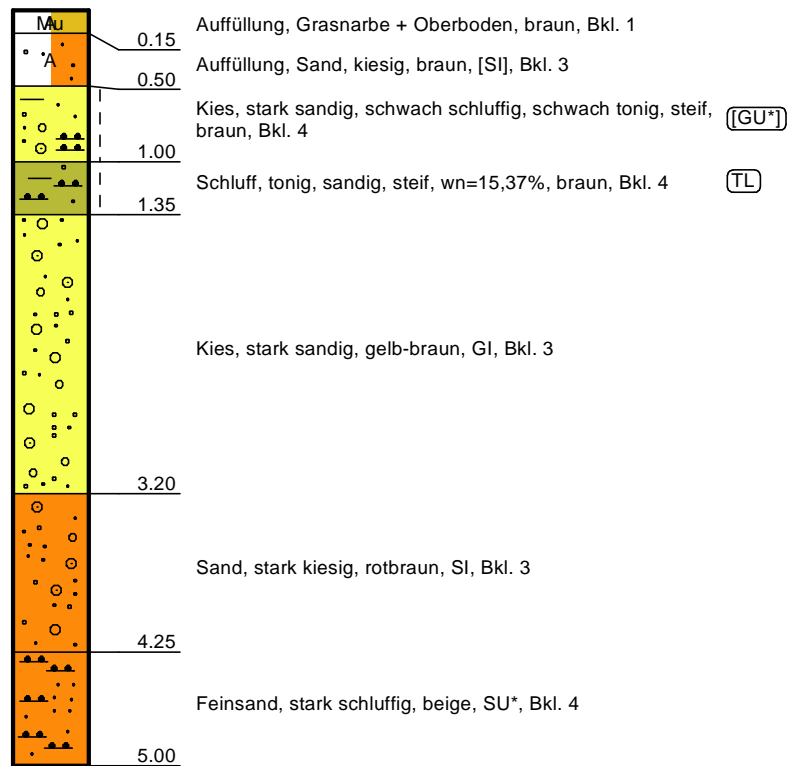
130,19 mNN





### BS 57

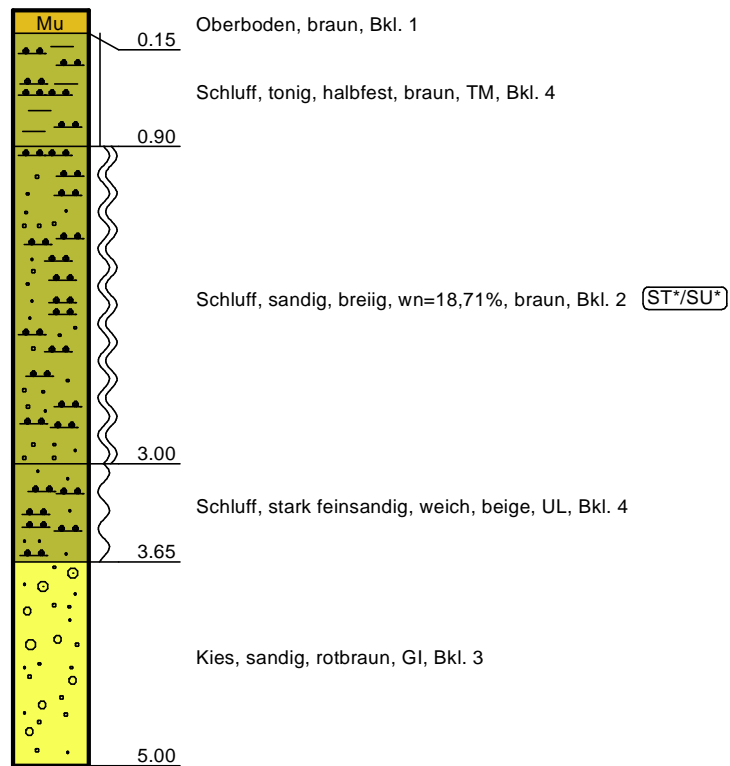
132,48 mNN

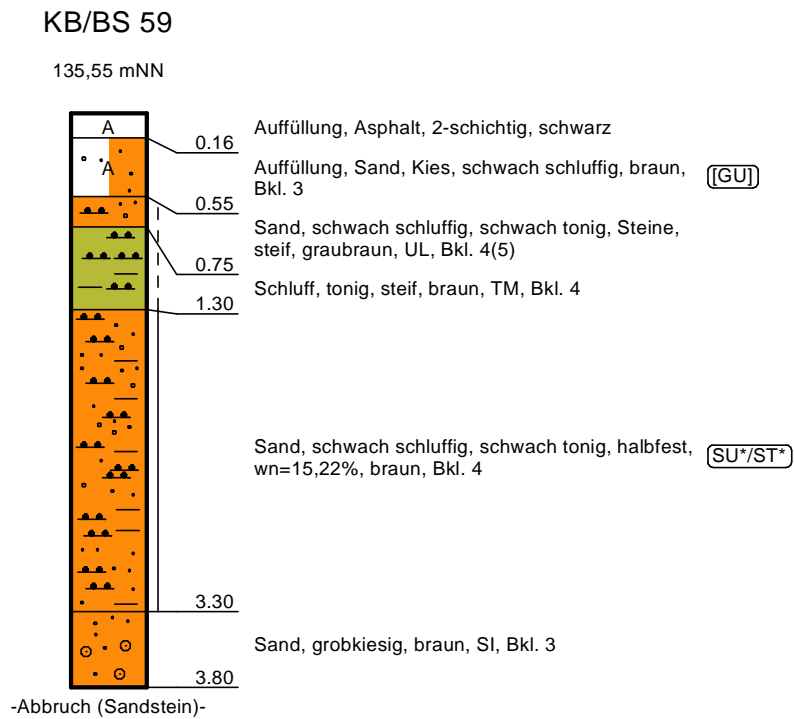
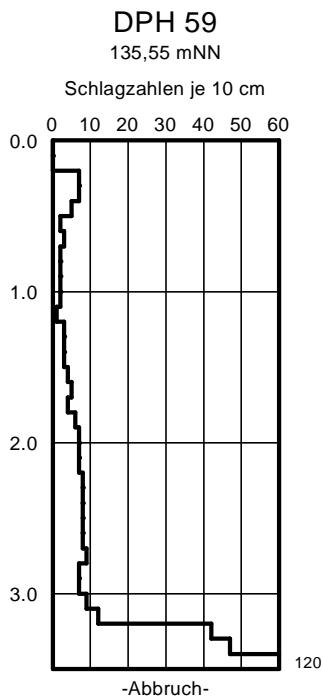




### BS 58

134,42 mNN

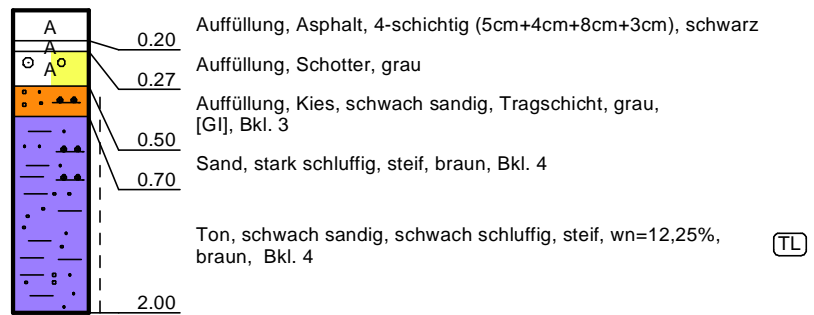






### KB/BS 60

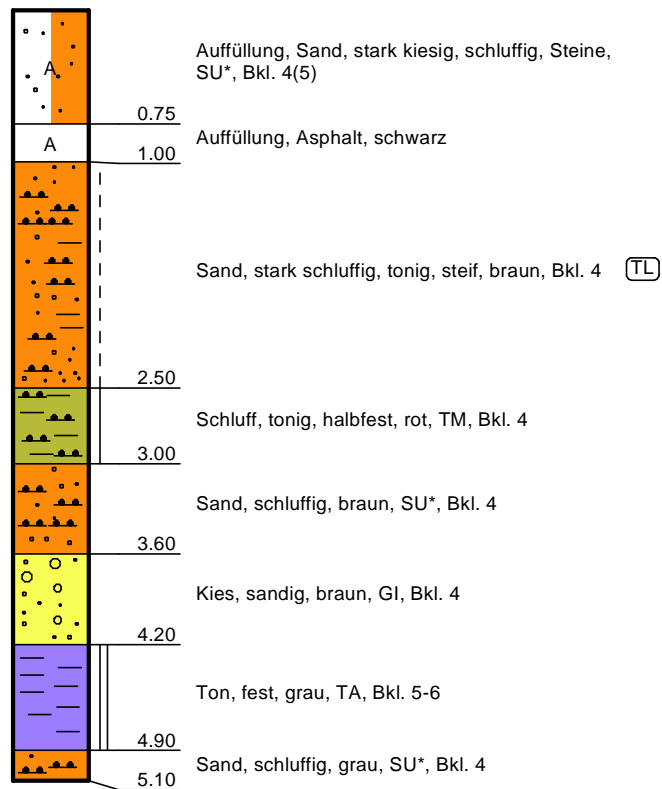
136,45 mNN





### BS 61

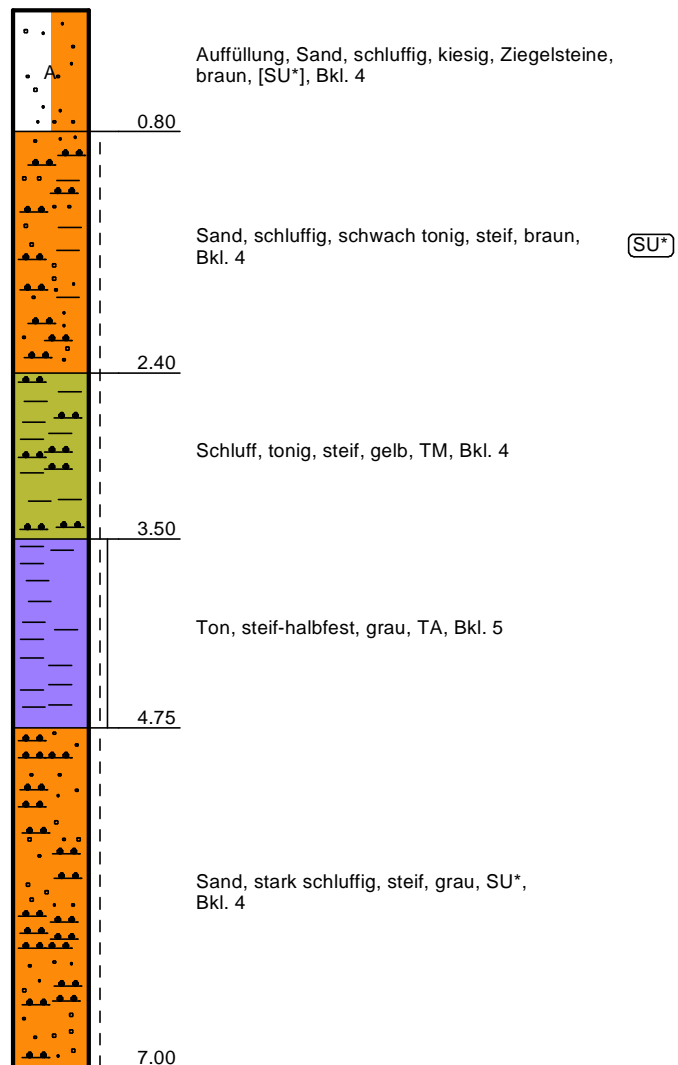
135,13 mNN





### BS 64

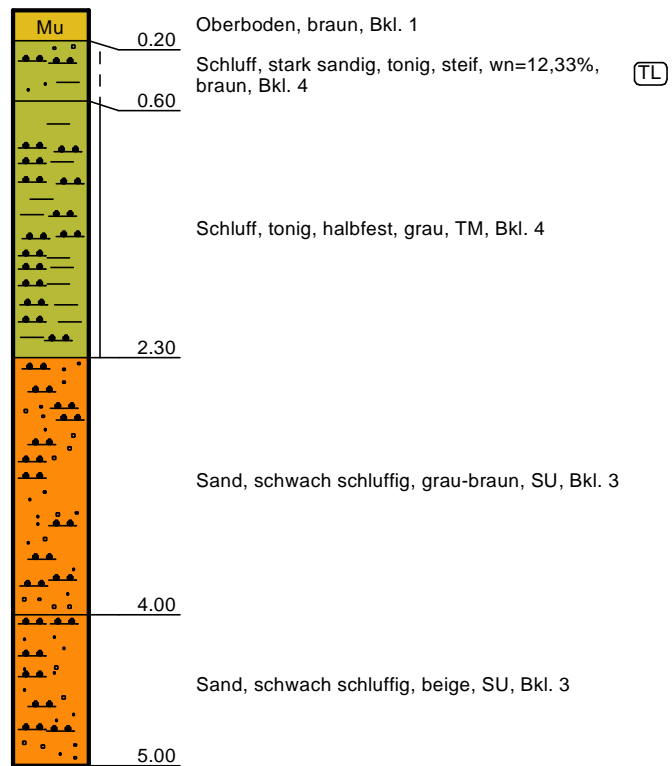
135,16 mNN



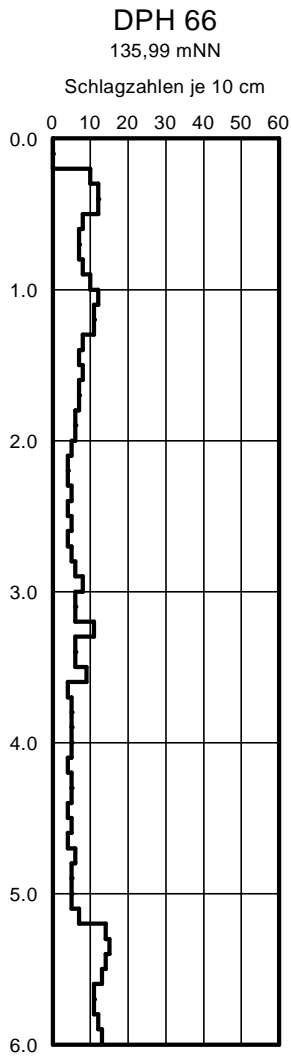


### BS 65

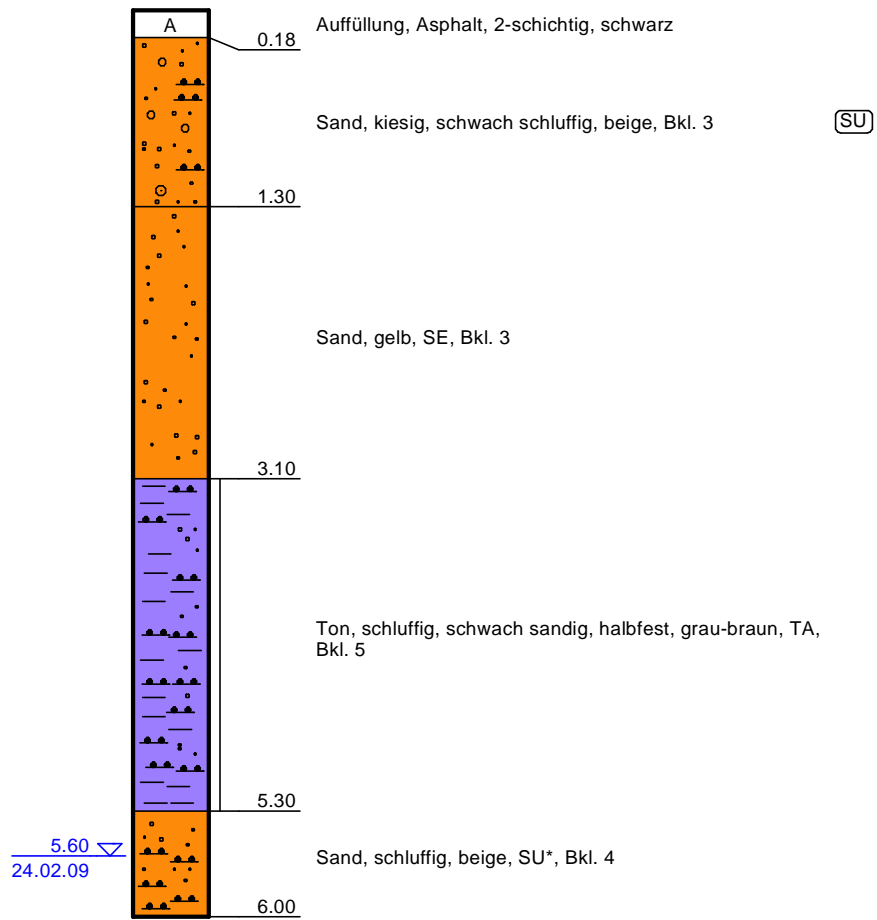
132,40 mNN







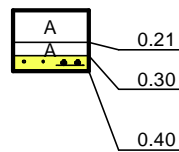
**KB/BS 66**  
135,99 mNN





### KB/BS 67

129,97 mNN



Auffüllung, Asphalt, 3-schichtig (8cm+10cm+3cm), schwarz

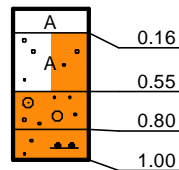
Auffüllung, Schotter, grau

Kies, schwach sandig, schwach schluffig, beige-grau, GU, Bkl. 3

- ABBRUCH -

### KB/BS 68

131,34 mNN



Auffüllung, Asphalt, 2-schichtig (4cm+12cm), schwarz

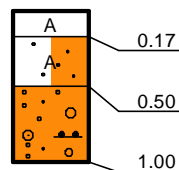
Auffüllung, Sand, kiesig, Tragschicht, beige-grau, [SI], Bkl. 3

Sand, schwach kiesig, schwach schluffig, beige-grau, SU, Bkl. 3

Sand, schluffig, einz. Kieselsteine, braun, SU\*, Bkl. 4

### KB/BS 69

133,57 mNN



Auffüllung, Asphalt, 3-schichtig (4cm+4cm+9cm), schwarz

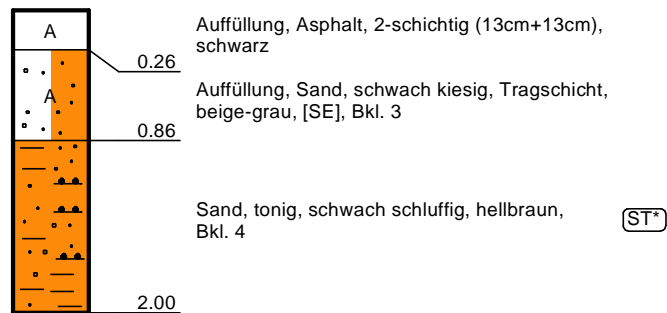
Auffüllung, Sand, kiesig, schwach schluffig, Tragschicht, beige-grau, [SU], Bkl. 3

Sand, schwach kiesig, schwach schluffig, hellbraun-rot, SU, Bkl. 3



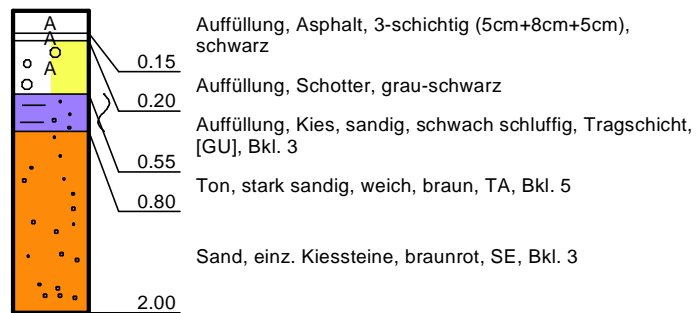
### KB/BS 70

136,87 mNN



### KB/BS 71

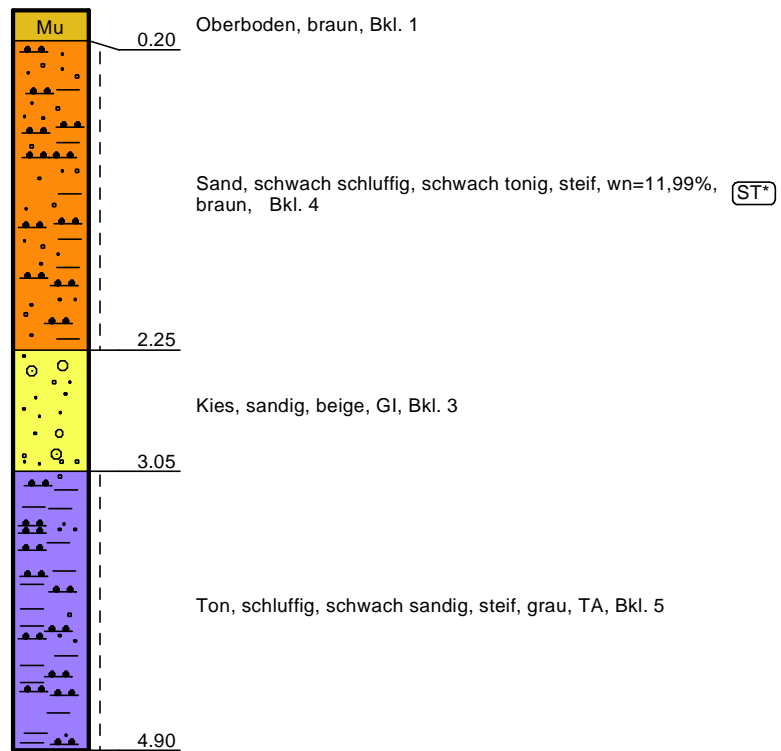
137,18 mNN





### BS 72

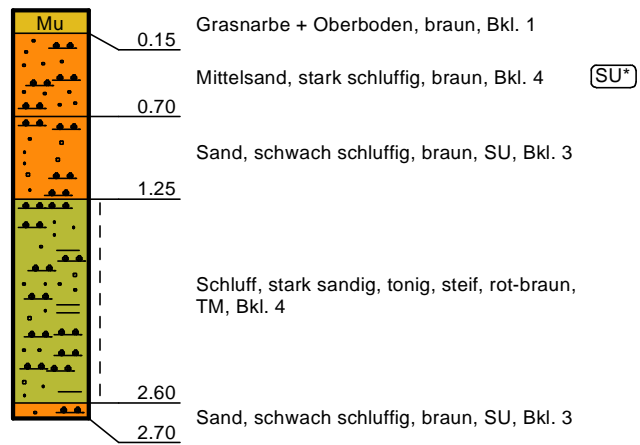
135,41 mNN





### BS 73

138,25 mNN

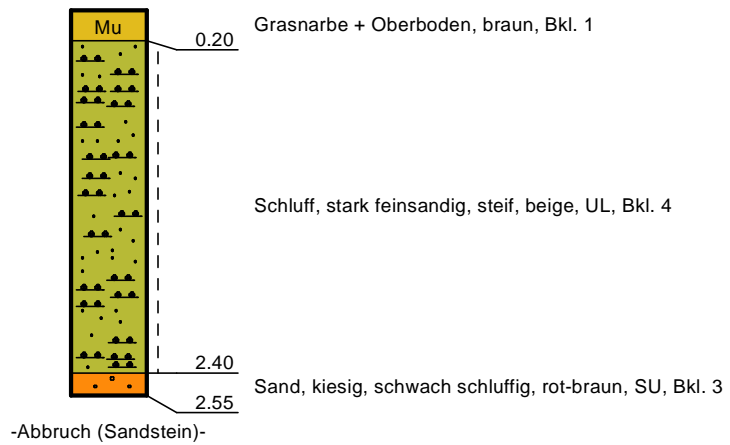


-Abbruch (Sandstein)-



### BS 74

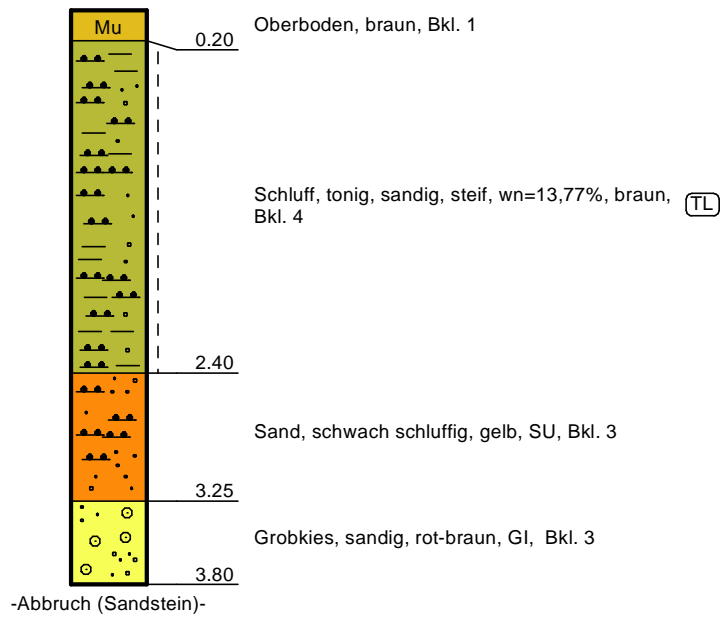
140,61 mNN





### BS 75

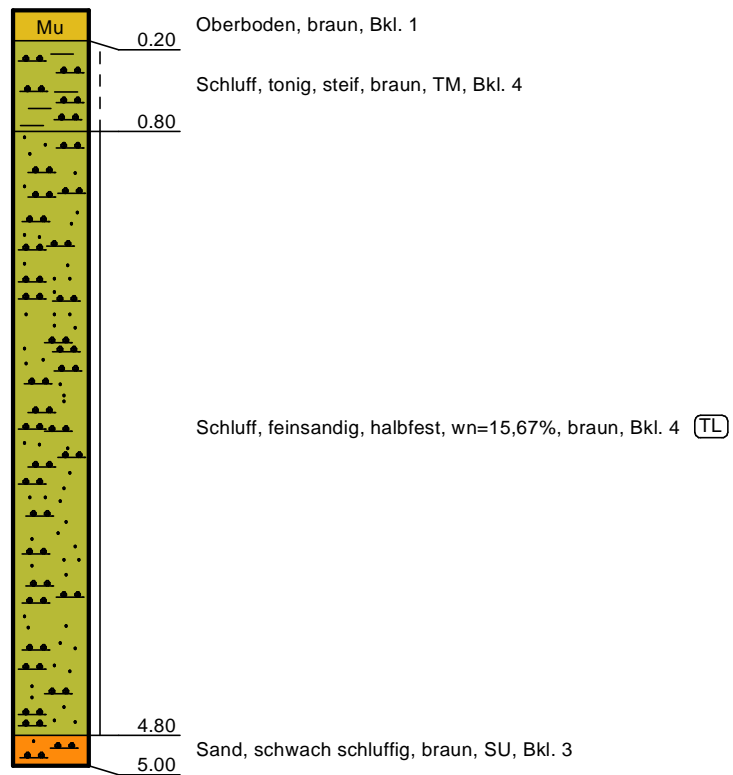
143,54 mNN





### BS 76

146,52 mNN

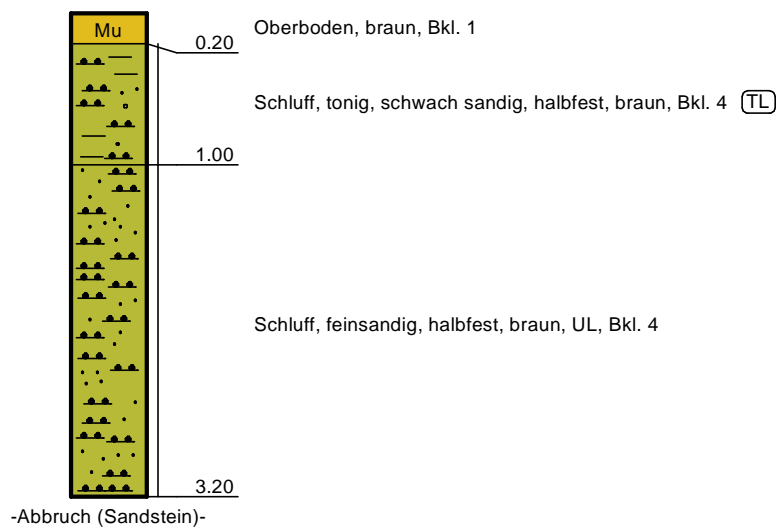






### BS 77

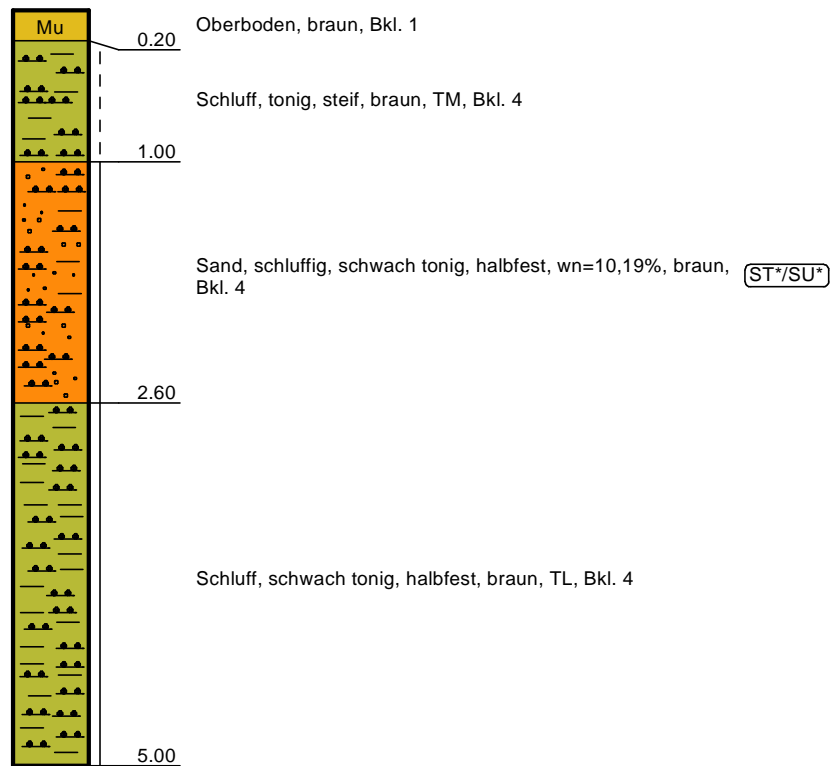
150,99 mNN





### BS 78

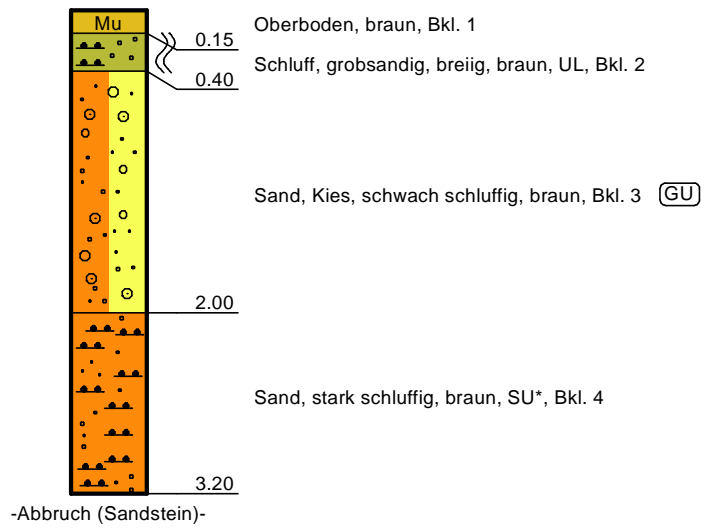
156,37 mNN





### BS 79

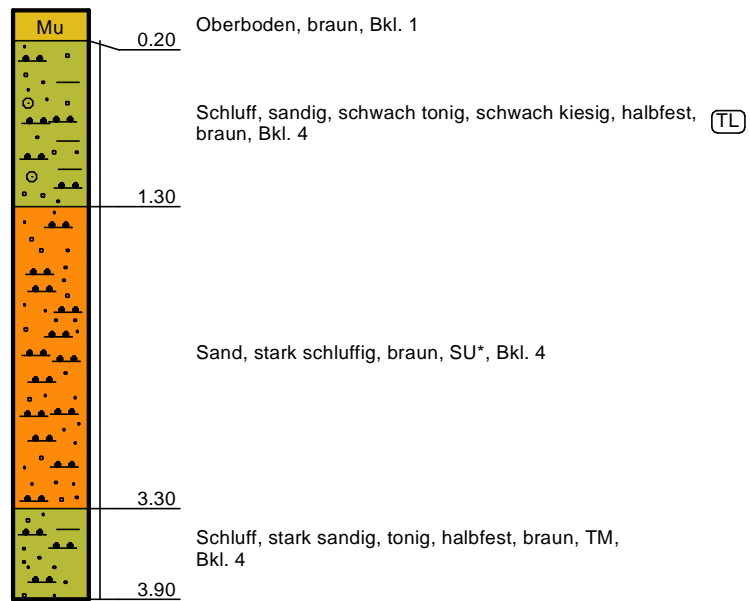
162,84 mNN





### BS 80

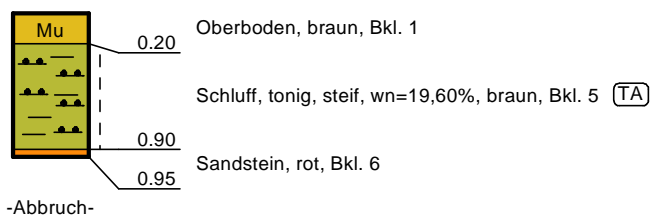
167,44 mNN





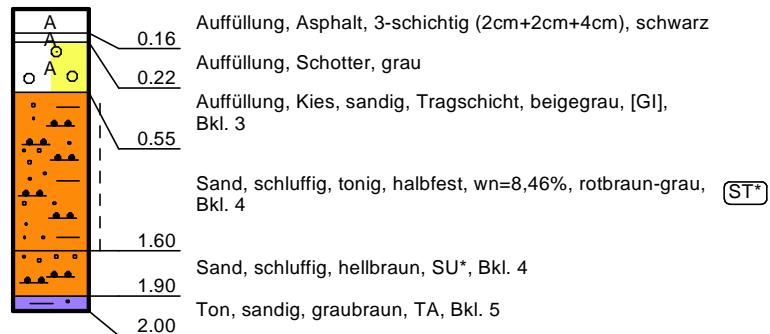
### BS 81

168,87 mNN



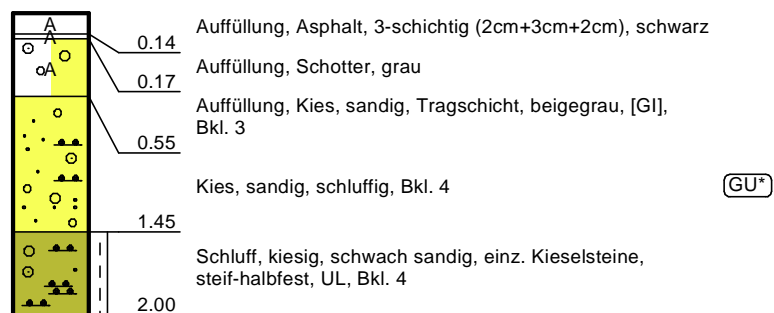
### KB/BS 82

171,04 mNN



### KB/BS 83

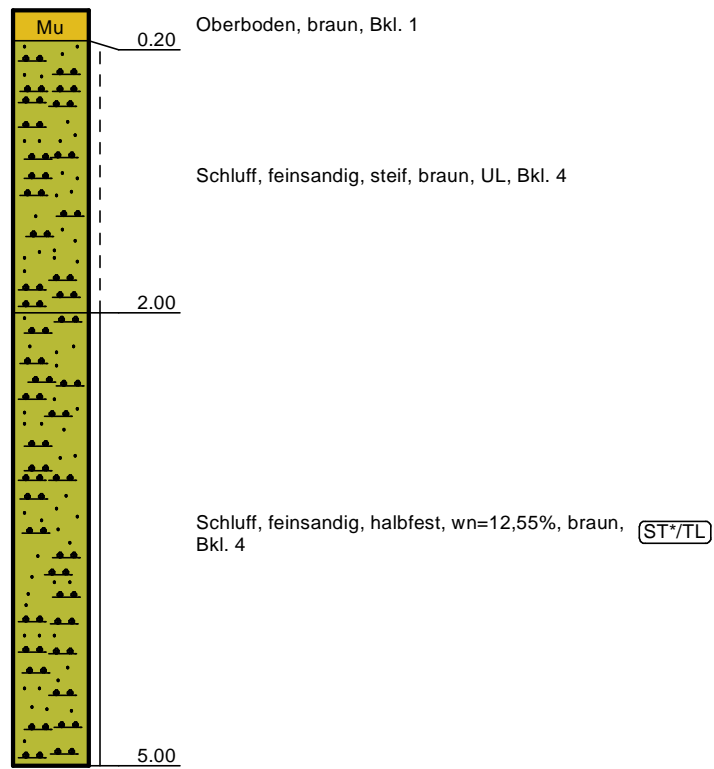
169,32 mNN





### BS 84

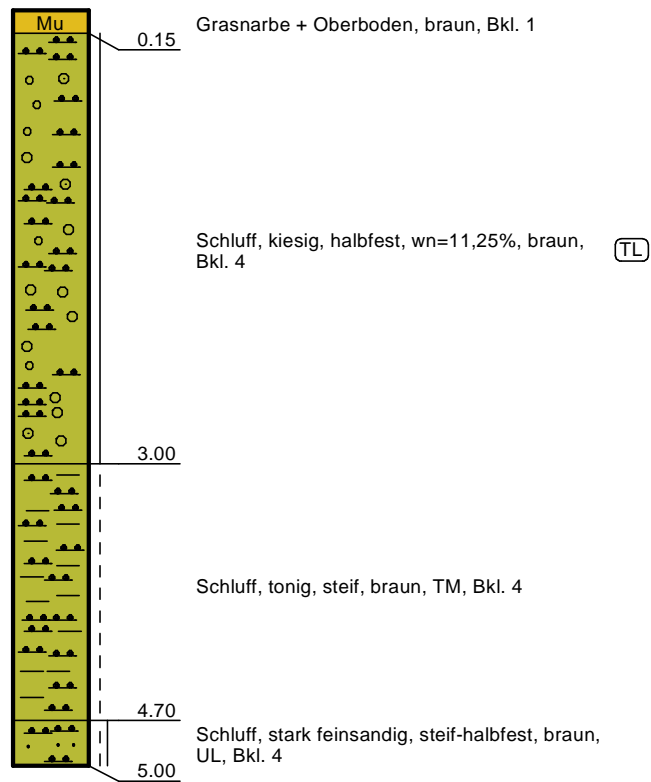
162,73 mNN





### BS 85

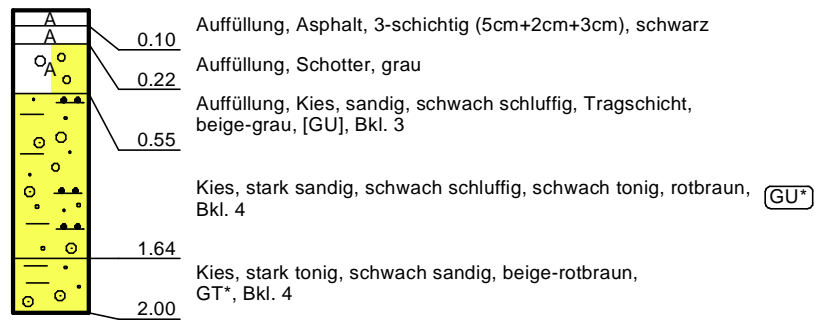
166,52 mNN





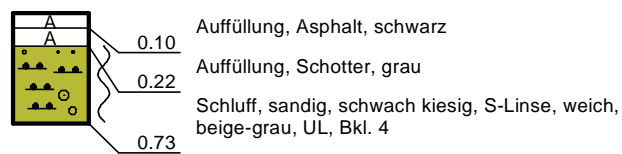
### KB/BS 86

169,33 mNN



### KB/BS 87

171,24 mNN



- ABBRUCH -